

Faculty/Staff Wireless Login Directions

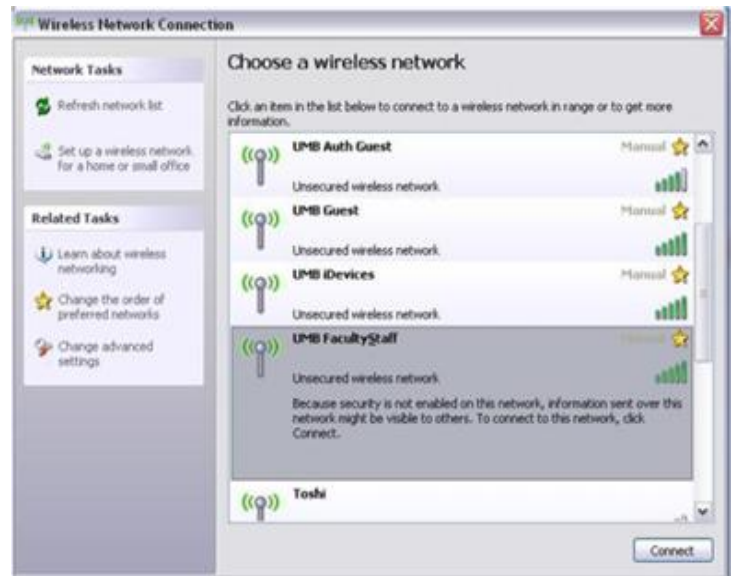
These directions are intended for faculty/staff members of the University of Maryland Baltimore.

Any UM students or guests wishing to connect wirelessly, please see the Event Services staff for appropriate login information. Thank you.

- 1.) Click green “Intel Pro Wireless” Icon and choose “Configure WiFi”



- 2.) Select “**UMB FacultyStaff**” and click “Connect”



- 3.) Open your internet browser and login with your myUMB username and password.

