

HUMAN RESEARCH PROTECTIONS PROGRAM (HRPP) TIP OF THE MONTH

MAY 2025



UNIVERSITY
of MARYLAND
BALTIMORE

Exemption Categories

The IRB makes the determination based on the information provided by the PI

CATEGORY 1

Normal educational practices in established or commonly accepted educational settings



CATEGORY 2

Research that includes ONLY educational tests, surveys, interviews and observations of public behavior



CATEGORY 3

Research involving benign behavioral interventions



CATEGORY 4

Secondary research use of identifiable private information and identifiable biospecimens for which consent is not required if one of four categories is met



CATEGORY 5

Research designed to study, evaluate, improve or otherwise examine public benefit or service programs



CATEGORY 6

Taste and food quality evaluation



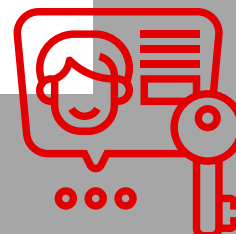
CATEGORY 7

Storage or maintenance of identifiable private information or identifiable biospecimens for secondary research



CATEGORY 8

Secondary research use of identifiable private information or identifiable biospecimens



620 W. Lexington Street
Second Floor
Baltimore, MD 21201



P 410-706-5037



www.umaryland.edu/hrp/