



Strategic Sourcing and Acquisition Services Organizational Chart

Keith Gagnon
Assistant Vice President

Patrice Gardner
Prgm Admin Specialist

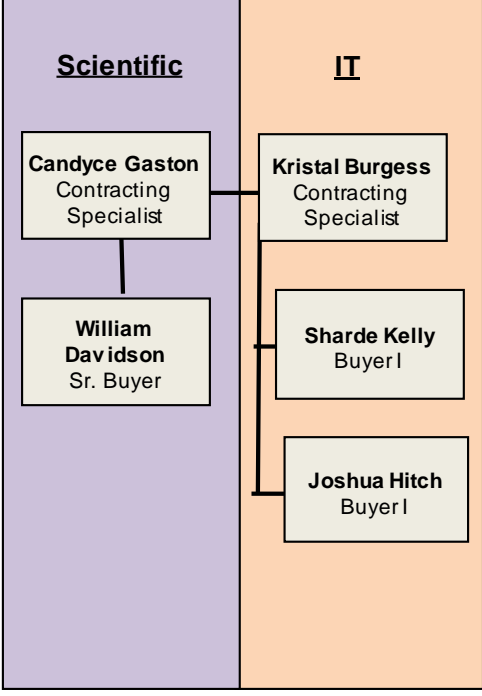
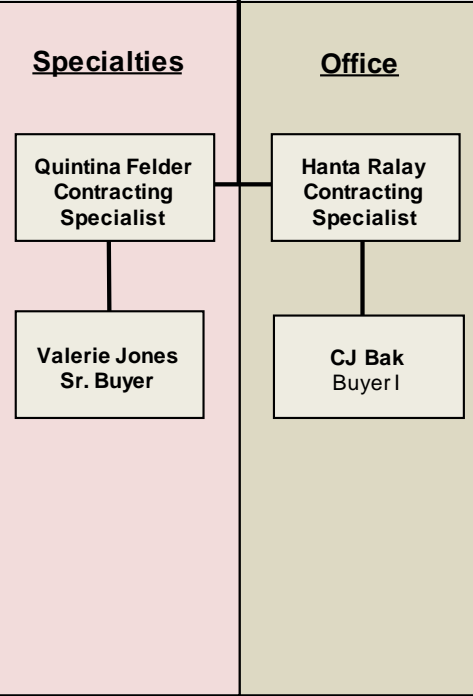
Florence Tinsley
Office Clerk II

Barbara Moser
Associate Director

Daw uad Murray
Buyers Clerk Sr

Regina Spencer
Assistant Director
MBE Liaison

Melvin Tuck
Logistics Manager



Carolyn Craighead
Program Admin Specialist

Sheneka Nichols
Subcontracting Specialist

Michelle Jordan
Manager
Mail Services

Jerome Powell
Storekeeper III
Warehouse A

Noah Wilson
Motor Equip Op II

Michael Scarborough
Motor Equip Op I

Postal Services Processors:
Noble Brown, Shannon Carter, Keyvonia Dudley, Renee Smith-Fraser, Scott Turner, Daniel J. Ward, Shunder White, Robert Wilson, Vacant, Vacant (C1)

Construction & Facilities Procurement

Jean Graziano
Executive Director

