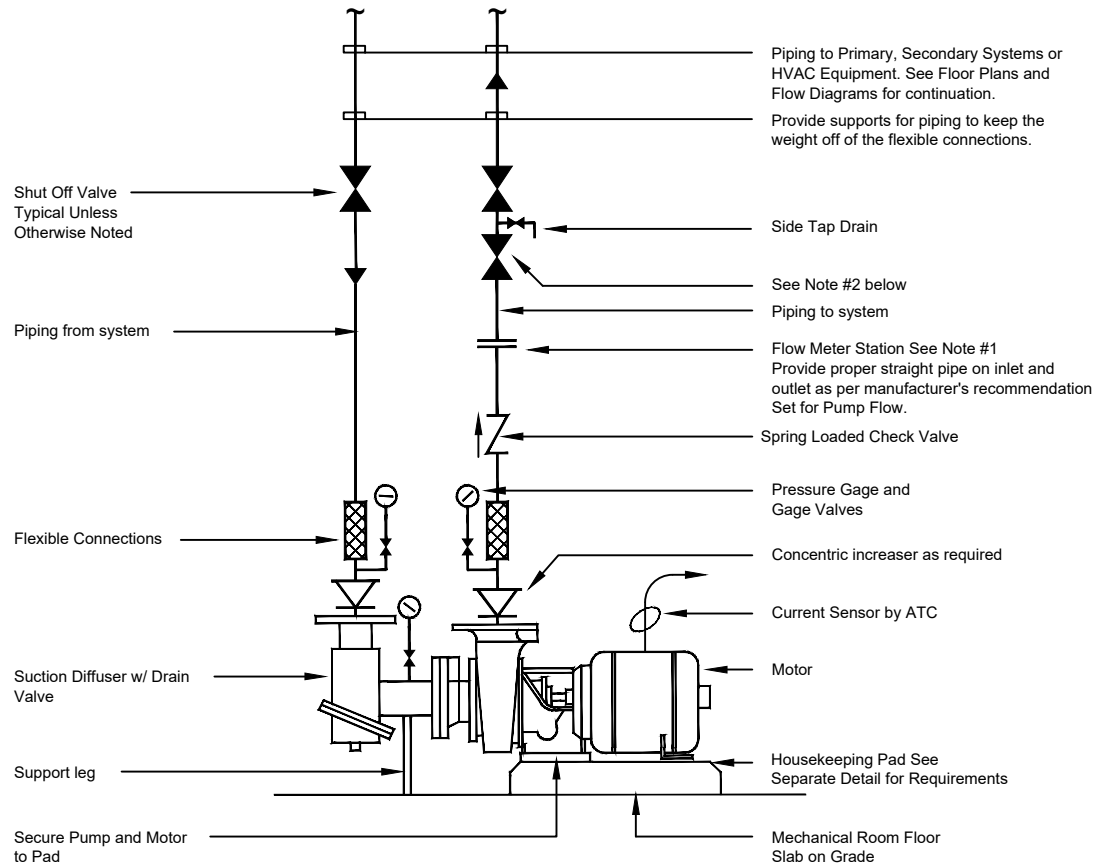


Typical Base Mounted End Suction Pump

No Scale

Notes :

1. When using Flanged, Welded or Grooved Pipe provide a Flow Meter Station without a Balancing Valve as specified.
2. Use Valve as a Combination Balancing / Shut Off Valve and add a Memory Stop as specified.
3. See Valve and Fitting Installation Detail for Additional Requirements
4. Support only pump weight on base. Support piping weight from structure with spring isolation hangers.
5. Provide anchor bolt templates and set anchor bolts and set anchor bolts with template before filling the base with concrete.
6. New housekeeping pad shall be a minimum of 6" beyond the footprint of the pump/motor footprint or the isolation base in all directions. When existing pads are reused modify pads as necessary for the new pump and motor footprint or new isolation base footprint to meet the pad size requirement.

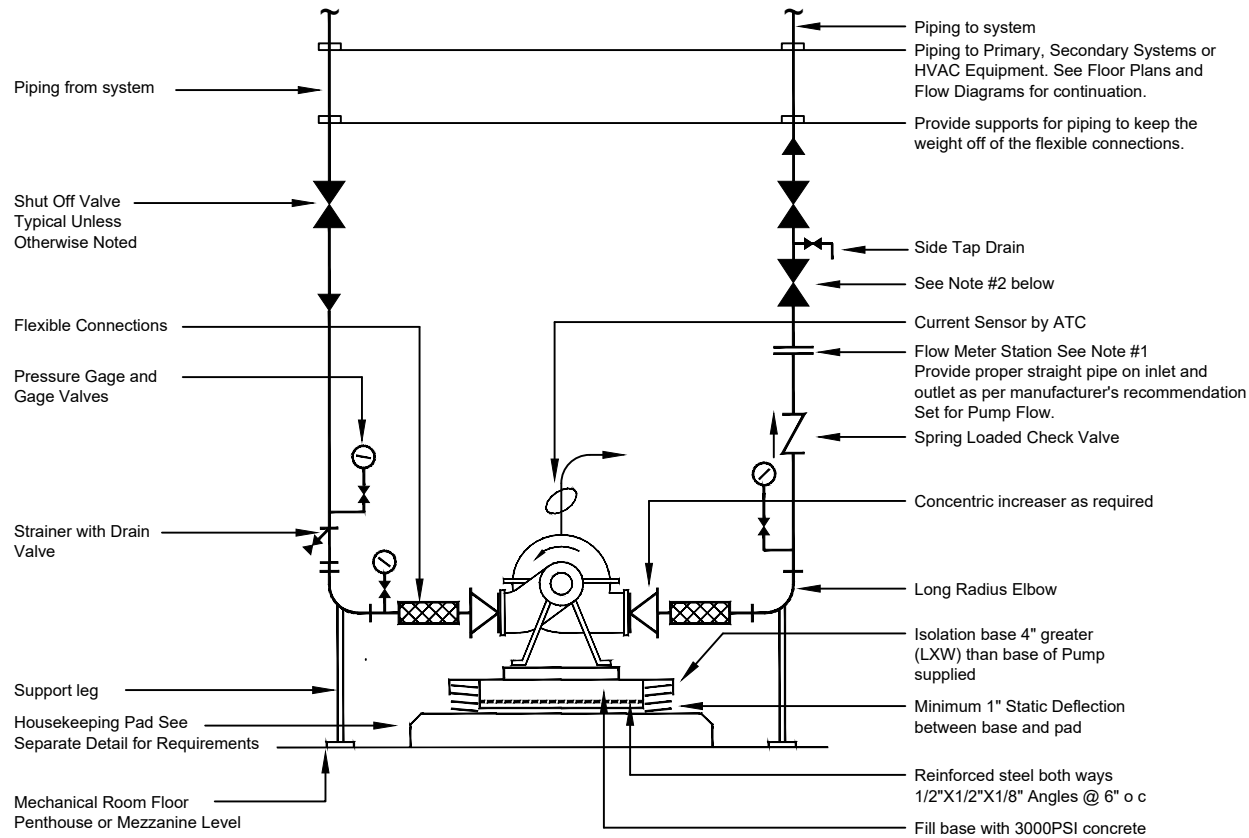


Typical Base Mounted End Suction Pump

No Scale

Notes :

1. When using Flanged, Welded or Grooved Pipe provide a Flow Meter Station without a Balancing Valve as specified.
2. Use Valve as a Combination Balancing / Shut Off Valve and add a Memory Stop as specified.
3. See Valve and Fitting Installation Detail for Additional Requirements
4. Support only pump weight on base. Support piping weight from structure with spring isolation hangers.
5. Provide anchor bolt templates and set anchor bolts and set anchor bolts with template before filling the base with concrete.
6. New housekeeping pad shall be a minimum of 6" beyond the footprint of the pump/motor footprint or the isolation base in all directions. When existing pads are reused modify pads as necessary for the new pump and motor footprint or new isolation base footprint to meet the pad size requirement.

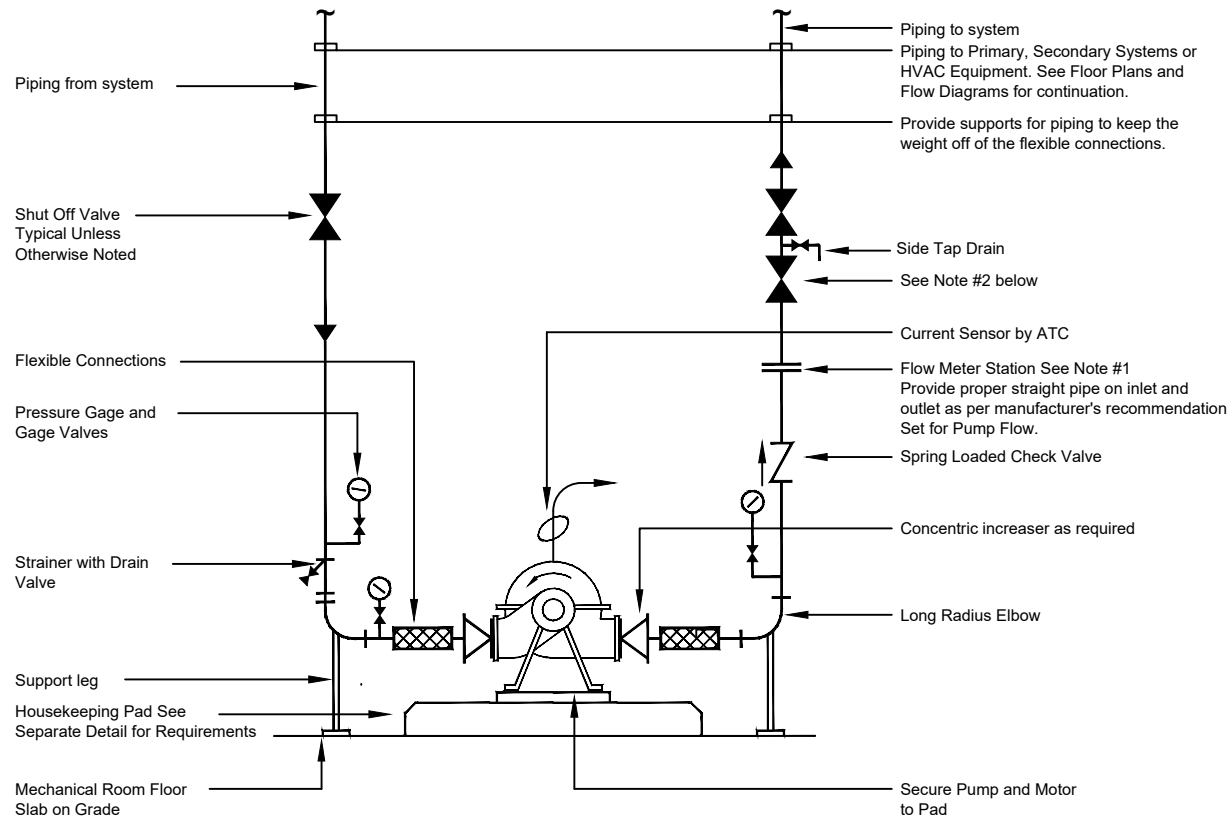


Typical Base Mounted Horizontal Split Case Pump

No Scale

Notes :

1. When using Flanged, Welded or Grooved Pipe provide a Flow Meter Station without a Balancing Valve as specified.
2. Use Valve as a Combination Balancing / Shut Off Valve and add a Memory Stop as specified.
3. See Valve and Fitting Installation Detail for Additional Requirements
4. Support only pump weight on base. Support piping weight from structure with spring isolation hangers.
5. Provide anchor bolt templates and set anchor bolts and set anchor bolts with template before filling the base with concrete.
6. New housekeeping pad shall be a minimum of 6" beyond the footprint of the pump/motor footprint or the isolation base in all directions. When existing pads are reused modify pads as necessary for the new pump and motor footprint or new isolation base footprint to meet the pad size requirement.

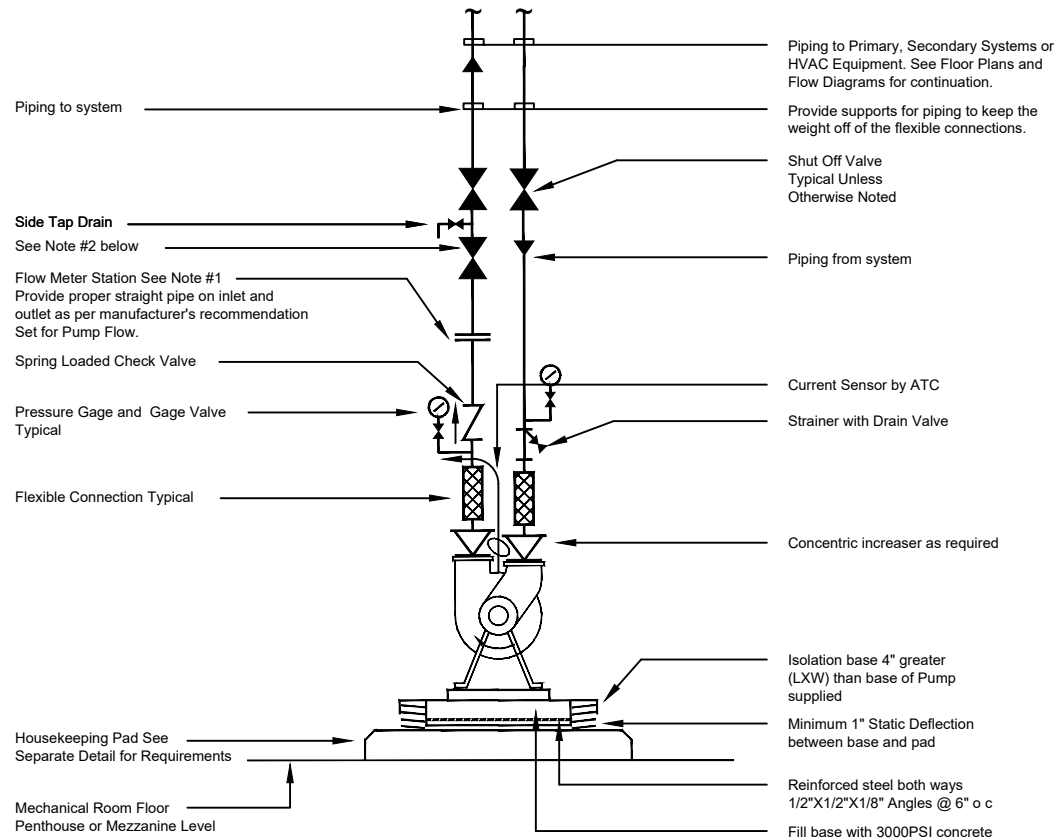


Typical Base Mounted Horizontal Split Case Pump

No Scale

Notes :

1. When using Flanged, Welded or Grooved Pipe provide a Flow Meter Station without a Balancing Valve as specified.
2. Use Valve as a Combination Balancing / Shut Off Valve and add a Memory Stop as specified.
3. See Valve and Fitting Installation Detail for Additional Requirements
4. Support only pump weight on base. Support piping weight from structure with spring isolation hangers.
5. Provide anchor bolt templates and set anchor bolts and set anchor bolts with template before filling the base with concrete.
6. New housekeeping pad shall be a minimum of 6" beyond the footprint of the pump/motor footprint or the isolation base in all directions. When existing pads are reused modify pads as necessary for the new pump and motor footprint or new isolation base footprint to meet the pad size requirement.

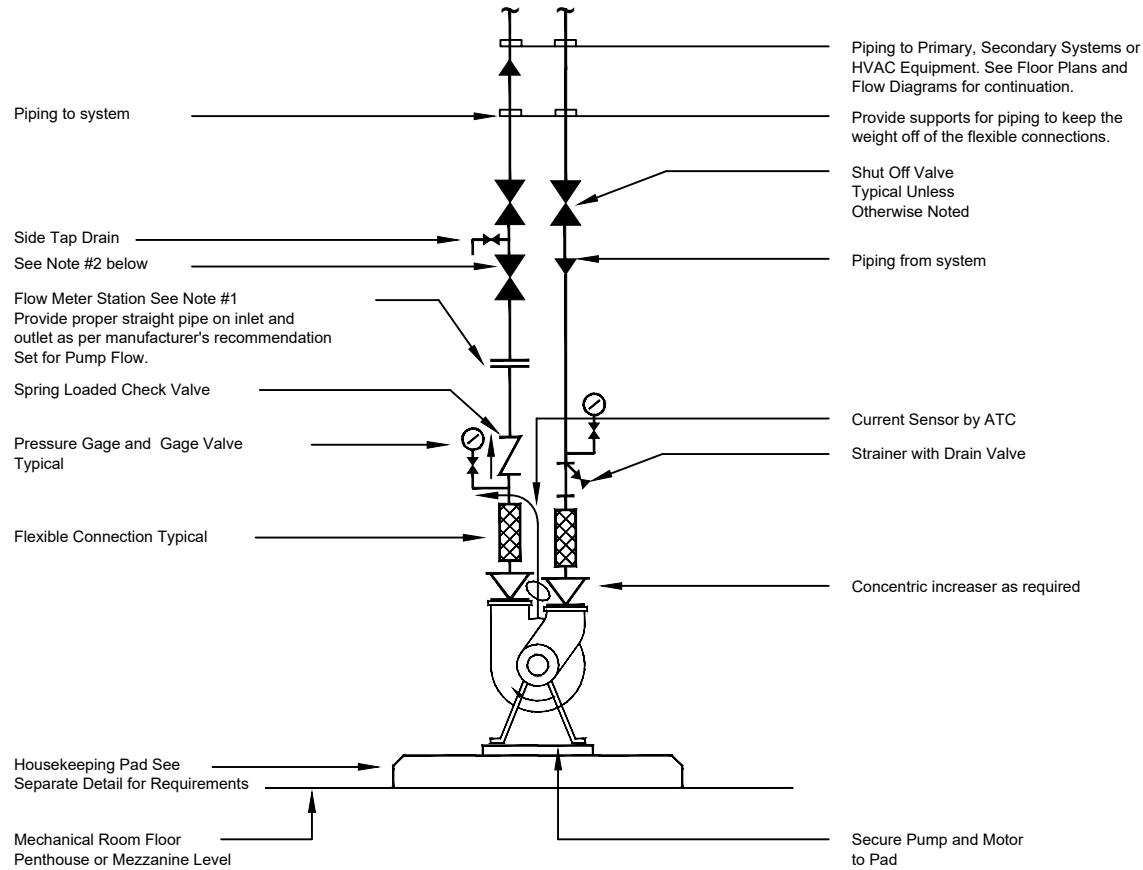


Typical Base Mounted Vertical Split Case Pump

No Scale

Notes :

1. When using Flanged, Welded or Grooved Pipe provide a Flow Meter Station without a Balancing Valve as specified.
2. Use Valve as a Combination Balancing / Shut Off Valve and add a Memory Stop as specified.
3. See Valve and Fitting Installation Detail for Additional Requirements
4. Support only pump weight on base. Support piping weight from structure with spring isolation hangers.
5. Provide anchor bolt templates and set anchor bolts and set anchor bolts with template before filling the base with concrete.
6. New housekeeping pad shall be a minimum of 6" beyond the footprint of the pump/motor footprint or the isolation base in all directions. When existing pads are reused modify pads as necessary for the new pump and motor footprint or new isolation base footprint to meet the pad size requirement.



Typical Base Mounted Vertical Split Case Pump

No Scale

Notes :

1. When using Flanged, Welded or Grooved Pipe provide a Flow Meter Station without a Balancing Valve as specified.
2. Use Valve as a Combination Balancing / Shut Off Valve and add a Memory Stop as specified.
3. See Valve and Fitting Installation Detail for Additional Requirements
4. Support only pump weight on base. Support piping weight from structure with spring isolation hangers.
5. Provide anchor bolt templates and set anchor bolts and set anchor bolts with template before filling the base with concrete.
6. New housekeeping pad shall be a minimum of 6" beyond the footprint of the pump/motor footprint or the isolation base in all directions. When existing pads are reused modify pads as necessary for the new pump and motor footprint or new isolation base footprint to meet the pad size requirement.