

Utilization and Effectiveness of Using a Patient Portal for Health Research Recruitment



Carrie Dykes, PhD

Director of Research Services

University of Rochester

Clinical and Translational Science Institute (UR CTSI)

MEDICINE *of* THE HIGHEST ORDER



CTSI
CLINICAL & TRANSLATIONAL
SCIENCE INSTITUTE



The presenter has documented that they have no financial relationships to disclose or Conflicts of Interest to resolve.

Recruitment: Translational Science Barrier

- For decades trials have failed to recruit and retain participants
 - 50% of trials
- Not treated as a science
 - Plans should be informed by literature and previous experience
 - Data should be collected and tracked in real-time
- CTSA Recruitment Innovation Center
(trialinnovationnetwork.org)



Austin, C.P. (2021), Opportunities and challenges in translational science. Clin Transl Sci, 14: 1629-1647. <https://doi.org/10.1111/cts.13055>
Beskow LM, Brelsford KM, Hammack CM. Patient perspectives on use of electronic health records for research recruitment. BMC Med Res Methodol. 2019 Feb 26;19(1):42. doi: 10.1186/s12874-019-0686-z. PMID: 30808279; PMCID: PMC6390331.

Use of EHR for Recruitment

- Patients support direct contact by researcher
- How can this be achieved?
 - Point of Care notices
 - Research registries and clinic registration
 - Patient Portal messages (MyChart)
 - >12 CTSA institutions
- TIN Webinar, Johns Hopkins University
 - <https://trialinnovationnetwork.org/elements/network-events/?key-element=18344&category=archives>

Beskow LM, Brelsford KM, Hammack CM. Patient perspectives on use of electronic health records for research recruitment. BMC Med Res Methodol. 2019 Feb 26;19(1):42. doi: 10.1186/s12874-019-0686-z. PMID: 30808279; PMCID: PMC6390331.

Embi PJ, Jain A, Clark J, Harris CM. Development of an electronic health record-based Clinical Trial Alert system to enhance recruitment at the point of care. AMIA Annu Symp Proc. 2005;2005:231-5. PMID: 16779036; PMCID: PMC1560758.

Kluding PM, Denton J, Jamison TR, Brooks W, Blackwell K, Lantos JD, Waitman LR, McMahon TM, Choudhary A, Bott MJ, Greiner A, Klaus S, O'Brien-Ladner A, Aaronson LS, Burns J, Barohn R. Frontiers: Integration of a Research Participant Registry with Medical Clinic Registration and Electronic Health Records. Clin Transl Sci. 2015 Oct;8(5):405-11. doi: 10.1111/cts.12309. Epub 2015 Aug 3. PMID: 26243261; PMCID: PMC4673893.

Recruitment Unit Team



Ann Dozier, Ph.D.
Chair, PHS
Recruitment Unit
Director



Cody Gardner,
M.B.A.
Recruitment
Engagement
Specialist



Karen Vitale,
M.S.Ed
Director
Population Health



David Pinto, R.N.
Clinical Research
Informatician



Pavithra Panjala,
B.S.
Data Analyst

Deepa Premnath, M.Ed.
Health Project Coordinator

Mission

To provide efficient and high-quality research services to UR faculty, staff, trainees, UR Medicine patients and community members.



CTSI Structure and Supports



Population
Health



Informatics



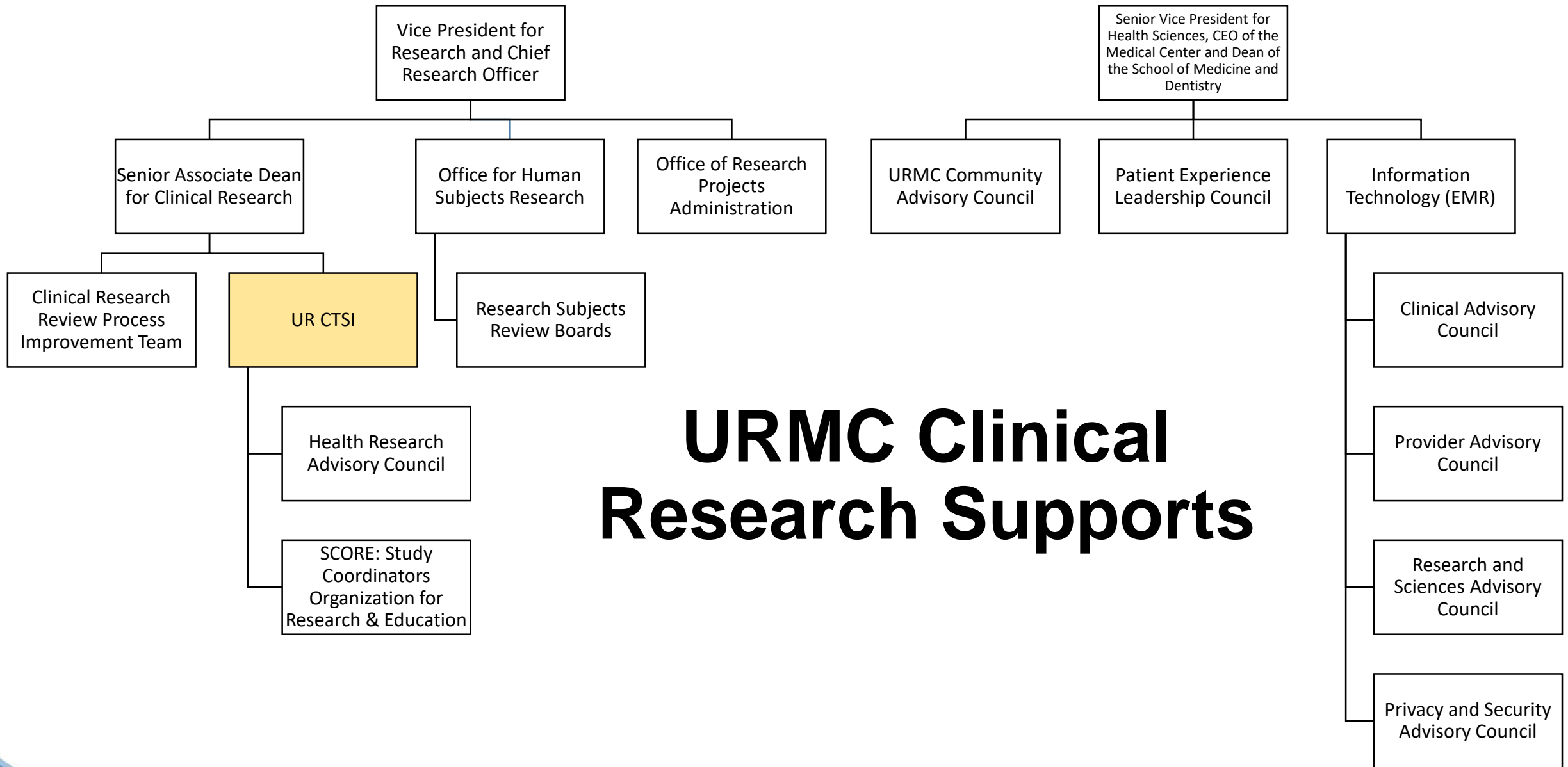
Research
Services



Research
Education
and Career
Development



Translational
Science



URMC Clinical Research Supports

Participant Recruitment Services

- Consultations
- Education
 - Recruitment and Retention Course- offered through PHS
- Surveys
 - Empowering the Participant Voice
 - Community Survey on Research
- Tools and Resources
 - Health research study listing page
 - Facebook advertising
 - Participant registries
 - Greater-Rochester Practice-Based Research Network
 - MyChart for Recruitment

UR Health Research



What is Health Research?

[Browse our frequently asked questions](#) for more information.

Get your questions answered



Find a Study

[Search for current clinical studies](#) by disease or condition.

View our clinical studies



Volunteer

[Add your name to our registry](#) to be contacted for future studies.

Make a difference

Social Media

- UR Health Research Facebook Page
- Meta ads
 - 91 campaigns for 71 projects from 2019 to 2023
 - Manuscripts
 - Hispanic young adult smokers
 - People with previous COVID infection
 - Country of Palau during COVID

Registries

- ResearchMatch.org
- UR CTSI Research Participant Registry

ResearchMatch.org

ResearchMatch.org is a national recruitment registry that brings together two groups of people who are looking for one another:

- (1) people who are trying to find research studies
- (2) researchers who are looking for people to participate in their studies via a secure website.

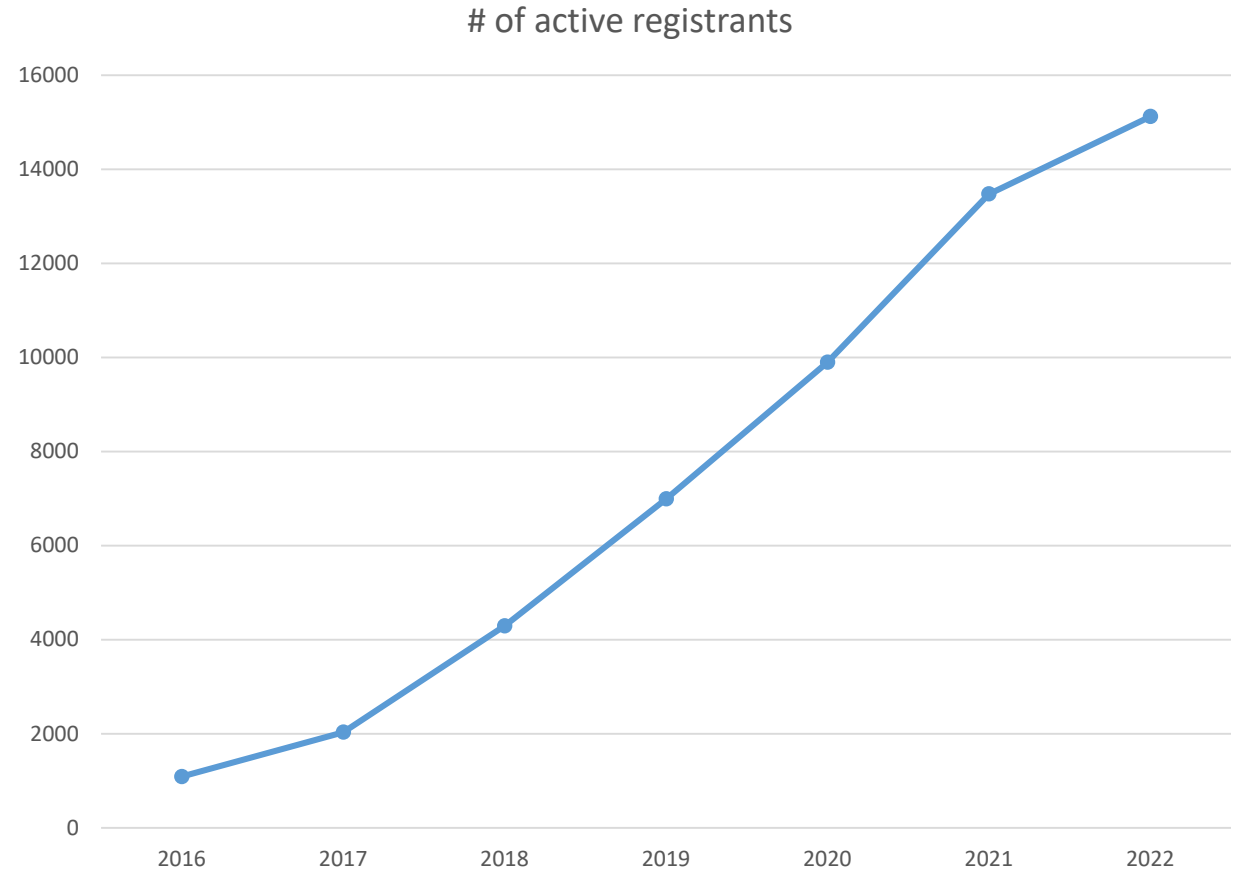


>157,000 registrants
>1300 studies
230 institution
>14,000 researchers

UR CTSI Local Registry

- Built a local registry of >15,000 participants
 - ~10,000 have email

	Registry	County Census
Children	6%	21%
Black registrants	20%	16%
Hispanic or Latino registrants	9%	10%



Weekly emails of recruiting studies. 40% open rate



Empowering the Participant Voice

- NCATS-funded collaborative grant
 - Rockefeller, Vanderbilt, Johns Hopkins, Wake Forest, Duke
- Collect feedback from research subjects using a validated survey
- Collects information about
 - Satisfaction with the research experience
 - Informed consent, coercion
 - Ability to reach research team
 - Respect, courtesy, value
- Developing interventions to improve scores

Community Research Survey

Survey done every other year

Community-not our patients

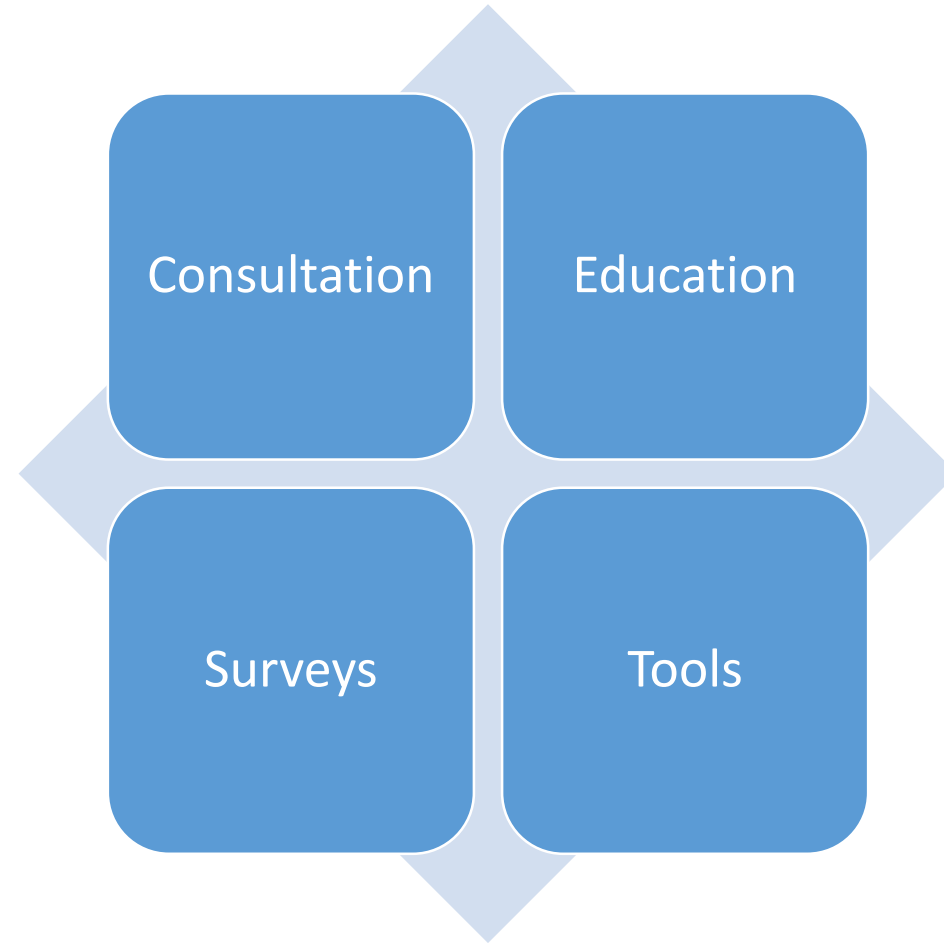
80% of participants think health research is important

Less willing to participate in studies with drugs, devices, injections

Black and Hispanic/Latino people think they are more likely to be asked to participate in riskier studies

Use to get feedback from subpopulations- complex care, rural, etc.

Recruitment Services

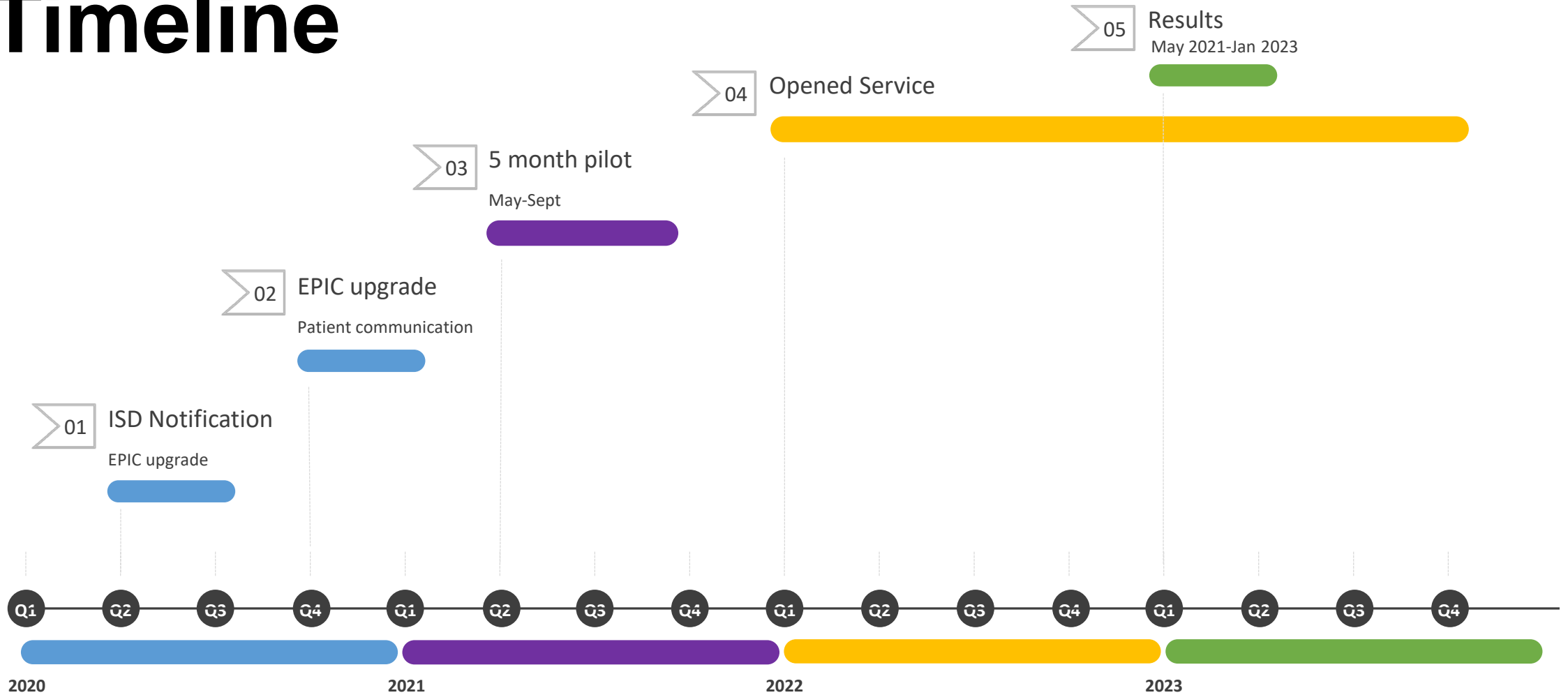


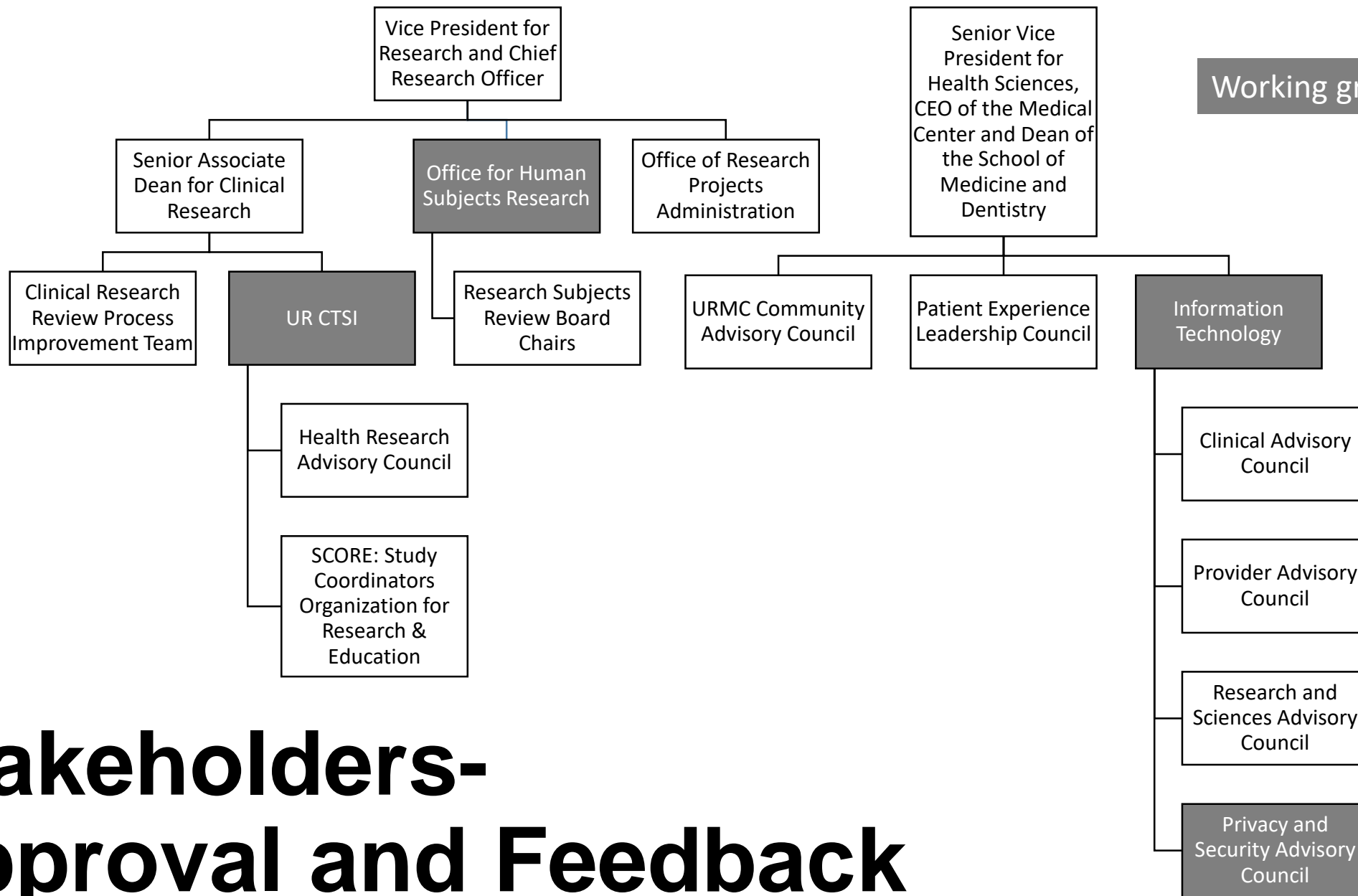
MyChart for Recruitment Implementation

Why MyChart?

- Point of Care alerts were a no-go with the clinicians
- We already had a process for our registries
- We have a no cold-calling policy
- Researchers could not get access to patients

Timeline





Working group members

Stakeholders-Approval and Feedback

Patient Communication 7 ways

How to learn more and how to opt out

The screenshot shows the MyChart patient message center interface. At the top, there is a navigation bar with icons for 'Your Menu', 'Appointments and Visits', 'Messages', 'Test Results', and 'Medications'. The user is logged in as 'Jack Switch'. The main content area is titled 'Message Center' and shows an 'Inbox' with a message from 'UR Medicine' dated '09/18/2020 10:23 AM'. The message content includes a 'Welcome!' section and a list of features and services available through MyChart. A red circle highlights the 'Health Resources' and 'Research' items in the list. The message concludes with a thank you note from UR Medicine and the MyChart Customer Service Team.

Message Center ASK A QUESTION

Inbox Sent Messages

Search message list Sort by: Received Date Filters: All Messages

RESTORE 0 DELETED MESSAGES MARK ALL AS READ

UR Medicine Visible To Jamie Mychart Print Delete
09/18/2020 10:23 AM

Welcome!

Welcome to MyChart, an online tool that allows you to view information from portions of your UR Medicine electronic health record, as well as some interactive tools to help manage your health care.

Here's a quick recap of what you can do with MyChart; more information and links to our FAQs are available in our [Need Help](#) section.

- **View Your Test and/or Imaging Results in MyChart:** [Read our FAQ on test results](#) to learn what is available to view and when. As we strive to make [your test results](#) available to you as soon as possible, it is likely that you will see results even before your health care team. Also tests ordered in groups may not all be ready at the same time, so you may see some results before others. We ask for your patience to allow your doctor a few days to communicate with you once the entire group of results is available. Thanks!
- **Message Your Health Care Team:** MyChart allows you to [send messages](#) to the office of a provider who you are scheduled to see within the next six months, or you have been seen by in the past year. Your message will be viewed by the provider's support staff initially, and forwarded to the doctor for response as appropriate. Important: Messages should be for non-urgent, simple matters. You may be requested to schedule a visit if your health care team believes the content of your message is best discussed in a face-to-face visit.
- **Request Appointments:** You can quickly [request an appointment](#) through MyChart. You also can [view your upcoming appointments](#), and view a [summary of past appointments](#).
- **View Checklist of Upcoming Tests:** Check out your [Labs / Tests To Do](#) to view the lab and/or imaging tests your providers have ordered for you; these may need to be completed before your next appointment!
- **Health Resources:** Within MyChart, you'll find links to health-related information such as an online medical dictionary and access to a medical librarian.
- **Research:** Within MyChart you may receive notifications of research study opportunities. To learn more, go to your [Research Studies](#) page. There you, select areas of research you are interested in, see what new opportunities you may be eligible for and what studies you are enrolled in or can opt-out of receiving research communications through MyChart.
- **Pay Your Bill from MyChart:** All charges for the care you receive at most UR Medicine locations, including Strong Memorial and Highland Hospital, the UR Medicine Urgent Care centers, our physician practices and lab sites now appear on one bill. In addition to viewing and paying your bill online, you have the option to go paperless and receive your statements electronically through MyChart. Access your [Billing Account Summary](#) or [Insurance Summary](#) in MyChart.

On behalf of UR Medicine, thank you for entrusting your care with us.

UR Medicine
MyChart Customer Service Team

Online MyChart Terms and Conditions

RESEARCH

Within MyChart you may receive notifications or messages from researchers about studies you may be eligible for. To learn more, log in and go to your Research Studies page. ***If you do not want to receive these messages, you must log in and indicate that you do not want to be contacted about research studies through MyChart.*** If you do want to be contacted, you can create a profile to select areas of research you are interested in, see what new opportunities you may be eligible for and what studies you are enrolled in. ***If you do not make a selection, we will assume that you are willing to be contacted.***

Research Connections

UR Medicine now offers health research studies right in MyChart. Patients will be offered research studies tailored to their health status. Visit the [Research Studies page in your MyChart](#) to learn more (you will need to login first), and to opt out if you do not want to receive research messages via MyChart. [Click to learn more!](#)



Prior to your UR Medicine upcoming appointment if you are experiencing a cough, fever, difficulty breathing that is new, body aches and/or a sore throat please call your doctor's office before you come to your appointment to be assessed. Please be aware that visitor restrictions are in place. If you have questions, please contact your care team.

MyChart Login

SIGN IN

Using Internet Explorer? [Login Here](#)



Sign Up

Become more engaged with your health, message your providers, view test results, appointments, pay your bills, and more!

[I Have An Activation Code](#)



Need Help?

Did you forget your username, password, or have general questions? Use the tools below to get started.

[I Forgot My Username](#)

Bottom of Login Screen

Additional Resources

- [Nominate an ICARE Star](#) - Recognize a UR Medicine employee who takes that extra step to deliver *Medicine of the Highest Order*
- [MedlinePlus®](#) - Disease, treatment, drug, healthy living information from the National Library of Medicine's MedlinePlus®
- [Cost Estimates](#) - Get a free cost estimate for an upcoming procedure.
- [Ask A Medical Librarian](#) - Can't find what you're looking for in MedlinePlus®? Ask a medical librarian.
- [Research Connections](#) - UR Medicine offers health research studies right in MyChart. You will be offered research studies tailored to your health status; you can also opt-out.



Site Links

[Home](#)
[Sign Up \(I Have An Activation Code\)](#)

Additional Resources

[UR Medicine Labs Locations](#)
[UR Medicine Imaging Locations](#)

Contact Information

[Phone Number](#)
› 1-888-661-6162, Opt. 1

New message in your MyChart - Message (HTML)

File Message Tell me what you want to do...


Ignore Delete Reply Reply Forward Done Team Email Reply & Delete Create New

Rules OneNote Mark Categorize Follow Translate Zoom

Unread Tags Up Editing Zoom

MYCHART@URMEDICINE.ORG Kenyon, Martha 10:39 AM

New message in your MyChart

 [Login](#)

New Message Available from your Doctor's Office

Login: <https://mychart.urmc.rochester.edu/mychart/>

Hello Jamie,

Please login to your MyChart account to view your New Message from your Doctor's Office. If you have forgotten your login information, you can click on the "[Forgot MyChart Username](#)" or "[Forgot Password](#)" links in the login box to retrieve information.

Thank you for using MyChart!

Help keep yourself, your family and the community safe by tracking your health daily. Even if you feel well, doing this simple screening every day can help stop the spread of COVID-19 and let our region recover. [Visit ROCCOVID.org](https://www.rocco.org) now.

Did You Know...

Research Connections

With MyChart you may receive notifications of research study opportunities. To learn more, log in and go to your [Research Studies](#) page. There you can select areas of research you are interested in, see what new opportunities you may be eligible for and what studies you are enrolled in or can opt-out of receiving research communications through MyChart.

Register to Pass Life On

Anyone age 16 and older can join the New York State Donate Life Registry, regardless of medical history or conditions. It's important to document your decision about organ donation so your wishes can be honored. Joining is fast, easy and can be done using any electronic device. [Enroll now and learn more about organ donation.](#)

**Note: Please do not reply to this email, as it is being sent from an unattended email account. If you have questions regarding this email, please contact your doctor's office or contact our MyChart Customer Service Center 8am to 5pm weekdays 585-275-8762, 1-888-661-6162. [Login to MyChart](#) to learn more about your notification settings on the Profile > Communications page.



Research Studies



Health research (which refers to clinical studies) is the way we learn about new and better ways to help people be healthier. Every study is a partnership between members of the community (you), doctors, and researchers. Participation from volunteers like you ensures there are ongoing advances in the healthcare. Your involvement plays a crucial role in improving the health of current and future generations.

MyChart will now offer health research studies to URMedicine patients of all ages, unless you indicate that you do not want to be contacted about research via MyChart. Your choice will not affect your use of MyChart for your clinical care.

If you are interested in learning more about research at the University of Rochester, visit URHealthResearch.urmc.edu. You can search a list of currently enrolling studies or sign up to be contacted for research outside of MyChart by either email, phone or letters.

Participation Preferences ^

May we contact you about opportunities to participate in research studies? **If no choice is made**, we will assume that you are willing to be contacted for research studies through MyChart. You can always change your contact preference in the future.

Create a profile to let us know the types of research you may be interested in.

Your Studies

You are not enrolled in any research studies or your research studies are not visible in MyChart.

- **Available Studies** - New study opportunities
- **Active Studies** - Studies in which you are currently enrolled. Note, this list may not include all research studies you participate in, but only those offered to you through MyChart. You may also be enrolled in research studies which were offered to you through other modes of communication such as email, phone or letters.

Participation Preferences

Your preferences will help us let you know about research opportunities that might interest you.

- **OK to Contact** - You are willing to be notified through MyChart about a research study that might be a fit for you.
- **Do Not Contact** - You are not willing to be notified through MyChart about a research study. You may still be contacted directly through your provider about a study either through MyChart or through other types of communication such as letters and phone calls.

If no choice is made: We will assume that you are willing to be contacted for research studies through MyChart. You can always change your contact preference in the future. Visit the Research Studies page.



Study Opportunity Description

Available Studies

Based on your medical record, you have been identified as potentially eligible for these studies. Click "I'm Interested" to notify the research team that you may want to participate in the study.

^ RSRB00070003 IMLT 17105 A Phase 1/2, Open-Label, Dose-Escalation, Safety and Tolerability Study of INCAGN01949 in Subjects With Advanced or Metastatic Solid Tumors

Principal Investigator

MARCUS NOEL, MD

Description

This study is testing the effectiveness of using MyChart functionality for recruiting patients. Specifically we are looking for patients with Rheumatoid Arthritis.

If you do not wish to be contacted via MyChart for research recruitment opportunities, please update your preference by clicking on the Participation Preferences section above.



I'M INTERESTED

NO, THANK YOU

Patient View

85% Ok to Contact
15% Do not Contact

Research Studies

Health research (which refers to clinical studies) is the way we learn about new and better ways to help people be healthier. Every study is a partnership between members of the community (you), doctors, and researchers. Participation from volunteers like you ensures there are ongoing advances in the healthcare. Your involvement plays a crucial role in improving the health of current and future generations.

MyChart will now offer health research studies to URMedicine patients of all ages, unless you indicate that you do not want to be contacted about research via MyChart. Your choice will not affect your use of MyChart for your clinical care.

If you are interested in learning more about research at the University of Rochester, visit URHealthResearch.urmc.edu. You can search a list of currently enrolling studies or sign up to be contacted for research outside of MyChart by either email, phone or letters.

[Participation Preferences](#) ^

May we contact you about opportunities to participate in research studies? **If no choice is made**, we will assume that you are willing to be contacted for research studies through MyChart. You can always change your contact preference in the future.

Participation Preferences

Your preferences will help us let you know about research opportunities that might interest you.

- OK to Contact** - You are willing to be notified through MyChart about a research study that might be a fit for you.
- Do Not Contact** - You are not willing to be notified through MyChart about a research study. You may still be contacted directly through your provider about a study either through MyChart or through other types of communication such as text messages and phone calls.

If no choice is made: We will assume you are willing to be contacted about research studies through MyChart. You can always change your preference in the future. Visit the Research Studies page.

Which areas of research would you be interested in?
You may receive messages about other areas of research.
Select all that apply.

Allergies & Immune System
 Blood, Heart, & Circulation
 Bones, Joints, & Muscles
 Brain & Nervous System
 Cancer
 Child Health
 Diabetes
 Digestive System & Liver
 Drug/Alcohol/Substance Dependence
 Ears, Nose, & Throat
 Endocrine System
 Eyes & Vision
 Food, Nutrition, & Weight
 Genetics
 Immune System
 Infectious Diseases
 Kidney & Urinary System
 Lungs & Breathing
 Mental/Behavioral Health
 Mouth & Teeth
 Newborn
 Pain Management
 Pregnancy & Neonatal
 Reproductive & Sexual Health
 Skin, Hair, & Nails
 Sleep Disorders
 Transplant
 Wellness & Lifestyle
 Women's Health

[Continue](#) [Cancel](#)

[BACK TO THE HOME PAGE](#)

- Available Studies** - New study opportunities
- Active Studies** - Studies in which you are currently enrolled. Note, this list may not include all research studies you participate in, but only those offered to you through MyChart. You may also be enrolled in research studies which were offered to you through other modes of communication such as email, phone or letters.

“Rules”

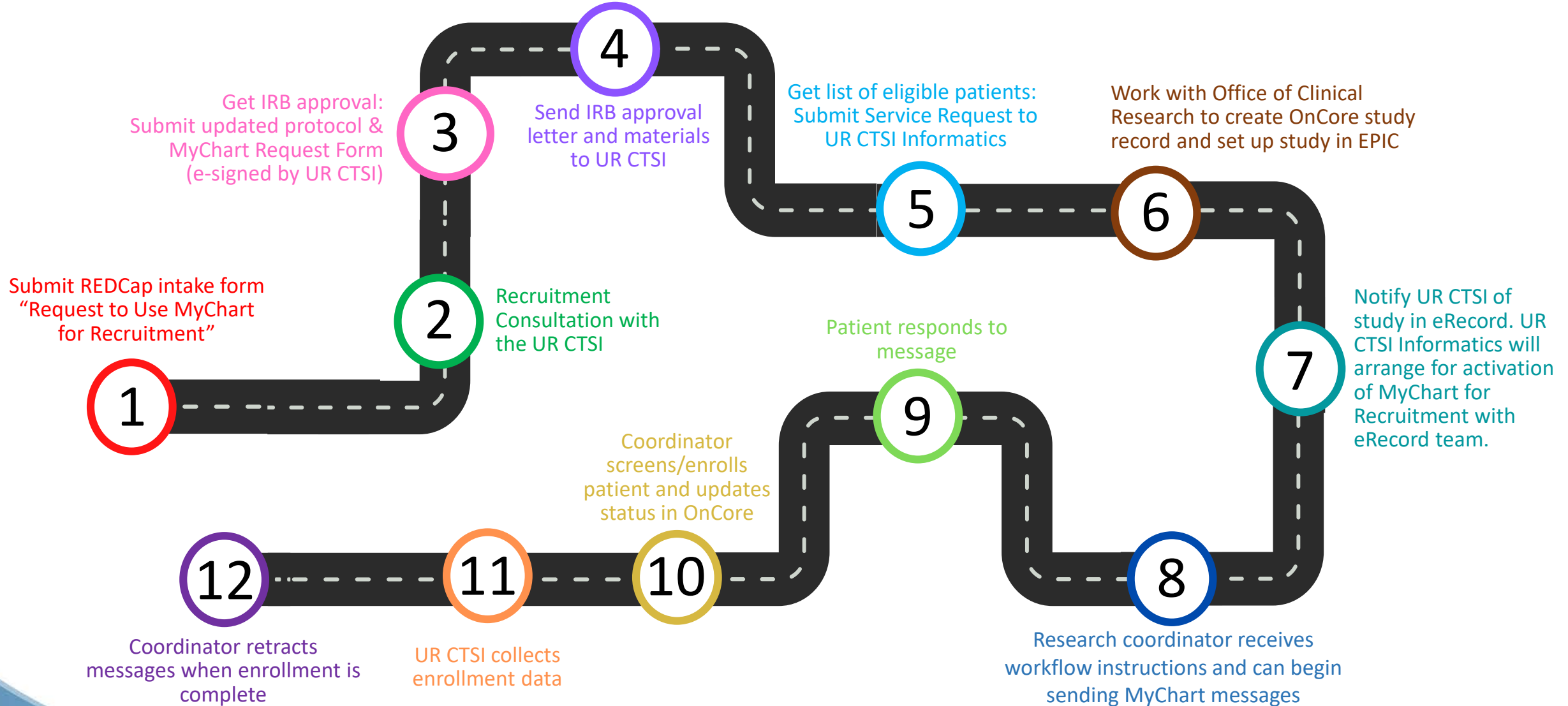
CTSI
Consultation



Research Team



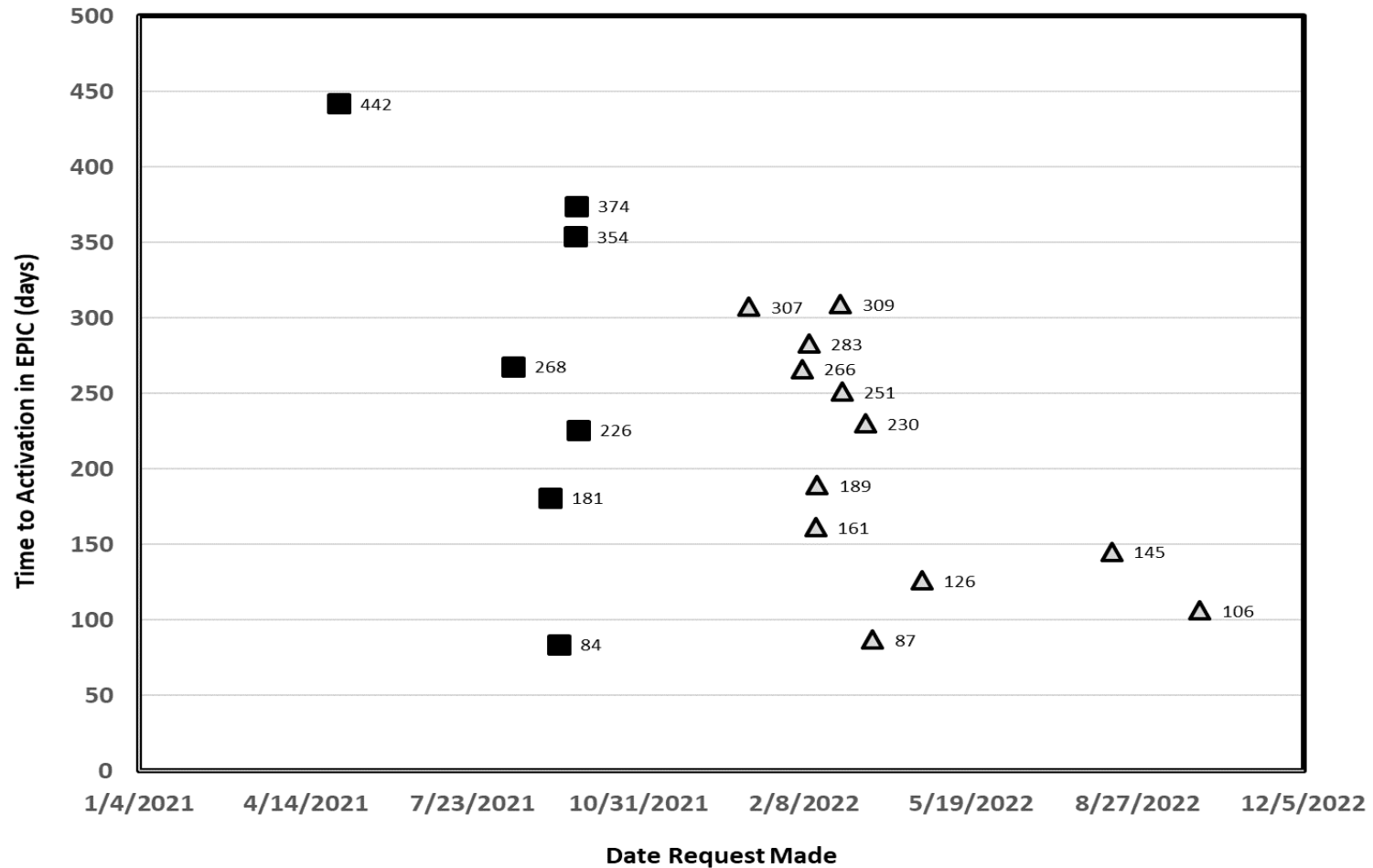
University of Rochester MyChart for Recruitment Process



Results

- Data collected from Jan 2021 to Jan 2023
- 59 requests
- 51 consults
 - 8 withdrew before consulting
- Average time from consult to study activation was 231 days (84-442)
- 19 studies sent messages
- 8,240 messages to 8,168 patients
 - 1-3 messages per patient

Time to Activation



Wide Range of Departments Participated

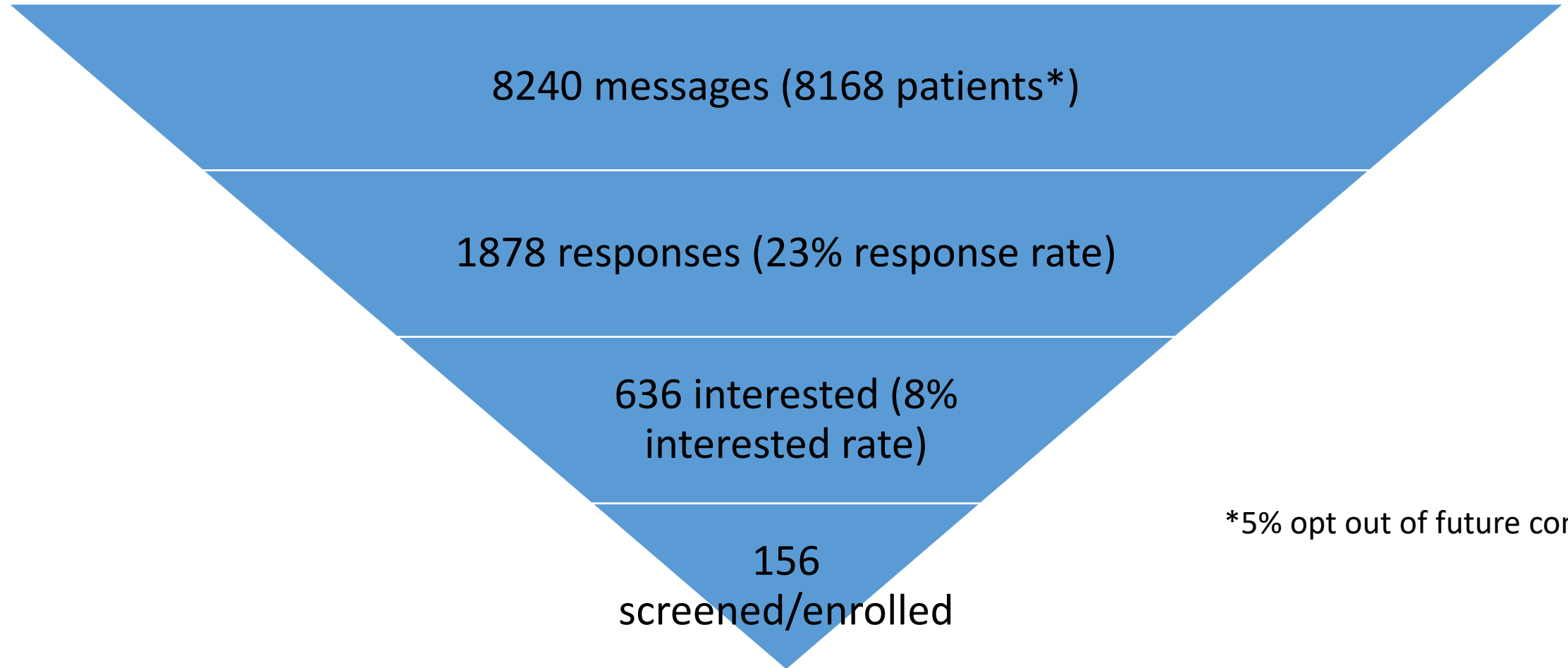
Department	# of Studies
Dermatology	1
Dentistry	1
Family Medicine	1
Gastroenterology and Hepatology	1
Neurology	2
Neurosurgery	1
Obstetrics and Gynecology	1
Oncology	2
Otolaryngology	1
Public Health Sciences	2
Psychiatry	4
Pulmonology	1
Surgery	1

Response rate varied by study

Demographics of patients receiving MyChart messages and Response Rates

		# of Patients (%)	Response Rate (%)
All Patients		8,168 (100)	23
Sex	Female	4,713 (57)	24
	Male	3,526 (43)	20
Age	0-10	16 (0.2)	0
	18-34	1,067 (12.9)	19
	35-54	2,610 (31.7)	22
	55-64	2,253 (27.3)	24
	65-95	2,292 (27.8)	25
Ethnicity	Hispanic	361 (5)	14
	Non-Hispanic	7,360 (95)	24
Race	American Indian or Alaska Native	28 (0.3%)	11
	Asian	604 (7.3)	9
	Black or African American	717 (8.7)	14
	White	6,564 (79.7)	26
	Unknown/Not Reported	327 (4.0)	12

Response Rates



*5% opt out of future contact

Study status of interested patients (N=636)

Study Status	# of patients (%)
Interested	480 (75)
Eligible	7 (1)
Not Eligible	16 (3)
Waiting for consent	14 (2)
On Study	67 (11)
On Treatment	5 (0.8)
Off Study	47 (7)

- Inability of research teams to reach patient
- Teams need reminders to update CTMS

Comments from Study Teams

Very helpful to talk through MyChart for recruitment as well as recruitment materials, graphics possibilities, and suggestions for future growth of our research program.

Using MyChart for enrollment made things so much easier and faster than having to go into clinics and wait to speak to potential participants.

We used CTSI for MyChart recruitment- it turned out helpful, but time consuming.

The CTSI's assistance with recruitment through MyChart has been a game changer, immensely helpful in our ever-increasing technology-heavy age.

My feedback would be to improve the tracking of subjects in the eRecord interface.

Lessons Learned

All types of studies can benefit

Study teams needed support identifying populations in EMR

Study teams needed support writing in plain language

Confusion about policy of using MyChart for Research

Created great visibility of other recruitment tools

We would like to acknowledge the members of the MyChart for Recruitment working group:

Jeanne Holden-Wiltse, CTSI Director of Informatics

Lauren Bruckner, Associate Professor of Pediatrics

Kellie Snider, Information Systems Division (ISD)

Martha Kenyon, ISD

Rachel Aleese, ISD

Carrie Irvine, Assistant Professor of Obstetrics and Gynecology

Ann Dozier, Chair and Professor of Public Health Sciences

Steven Wormsley, former Director of Research and Academic IT

Nicole Mason, former Director of the Office of Clinical Research

Kelley O'Donoghue, Associate VP for Human Subject Protection

Kathleen Tranelli, URMIC Privacy Officer

Funding

This project was supported by the University of Rochester CTSA award number UL1 TR002001 from the National Center for Advancing Translational Sciences of the National Institutes of Health. The content is solely the responsibility of the authors and does not necessarily represent the official views of the National Institutes of Health.



Carrie_Dykes@URMC.Rochester.edu

585-275-0736

42

Abbreviations

CTMS; clinical trial management system

CTSA; Clinical and Translational Science Awards

EMR; electronic medical record

ISD; Information Systems Division

IT; Information Technology

NCATS; National Center for Advancing Translational Science

UR CTSI; University of Rochester Clinical and Translational Science Institute

URMC; University of Rochester Medical Center