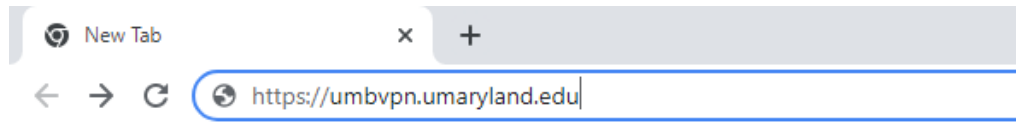


Palo Alto GlobalProtect Installation Instructions for Mac

1. Connect to <https://umbvpn.umaryland.edu>



2. You get redirected to WebAuth and are prompted to log in. Log in with your UMID and Password.

A screenshot of the University of Maryland Baltimore WebAuth login page. The page has a dark header with the university logo and name. Below the header, there are two input fields: "UMID:" with the value "thontz" and "Password:" with masked characters. A blue "Login" button is below the fields. At the bottom, there are links for "Forgot Password?", "First Time User, Setup Your Password", and "OneCard Guest Deposit". A small text "This is shibprd4." is at the very bottom.

3. A successful login takes you to the DUO Multi-factor Authentication (MFA) Prompt. Choose a method to complete DUO MFA

A screenshot of the Duo Multi-factor Authentication (MFA) Prompt page. The page has a dark header with the university logo and name. Below the header, there is a section titled "Choose an authentication method". It lists three methods: "Duo Push RECOMMENDED" with a "Send Me a Push" button, "Call Me" with a "Call Me" button, and "Passcode" with an "Enter a Passcode" button. There is also a checkbox for "Remember me for 7 days". On the left side, there are links for "What is this?", "Add a new device", "My Settings & Devices", and "Need help?". At the bottom left, it says "Secured by Duo".

4. This takes you to the GlobalProtect Client download page. Download the Mac 32/64 bit GlobalProtect agent.



GlobalProtect Portal

[Download Windows 32 bit GlobalProtect agent](#)

[Download Windows 64 bit GlobalProtect agent](#)

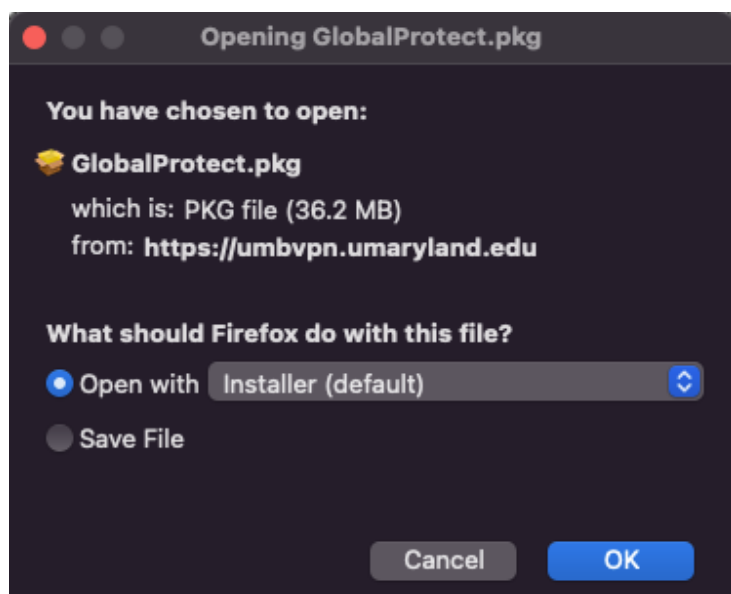
[Download Mac 32/64 bit GlobalProtect agent](#)

Windows 32 bit OS needs to download and install Windows 32 bit GlobalProtect agent.

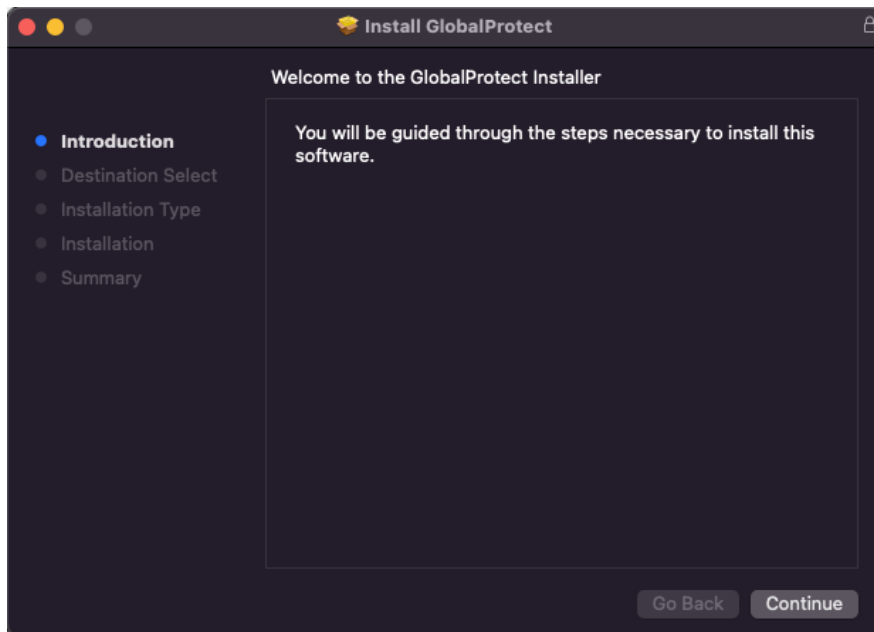
Windows 64 bit OS needs to download and install Windows 64 bit GlobalProtect agent.

Mac OS needs to download and install Mac 32/64 bit GlobalProtect agent.

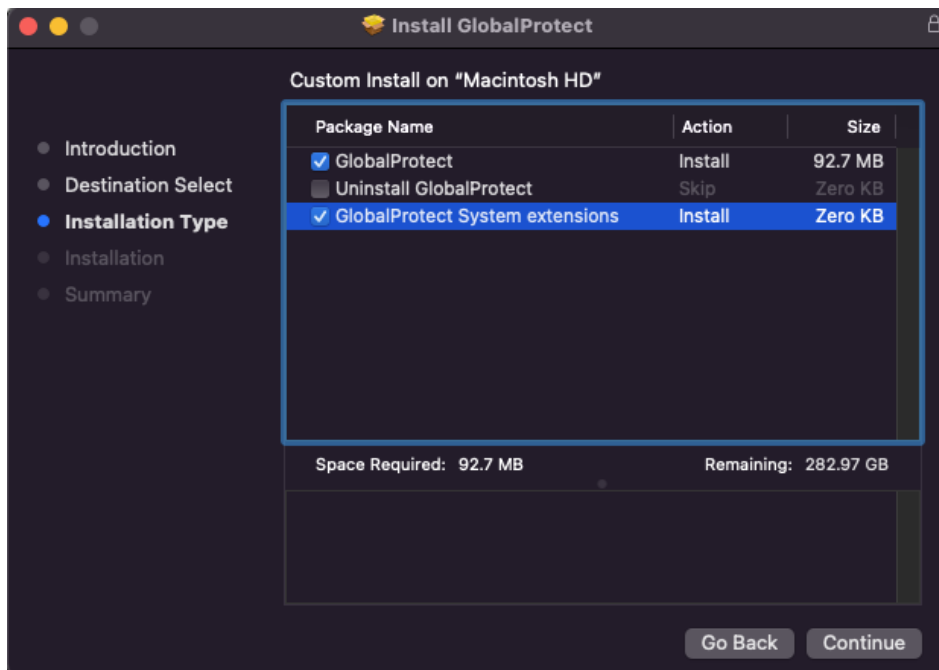
5. Open the GlobalProtect.pkg file



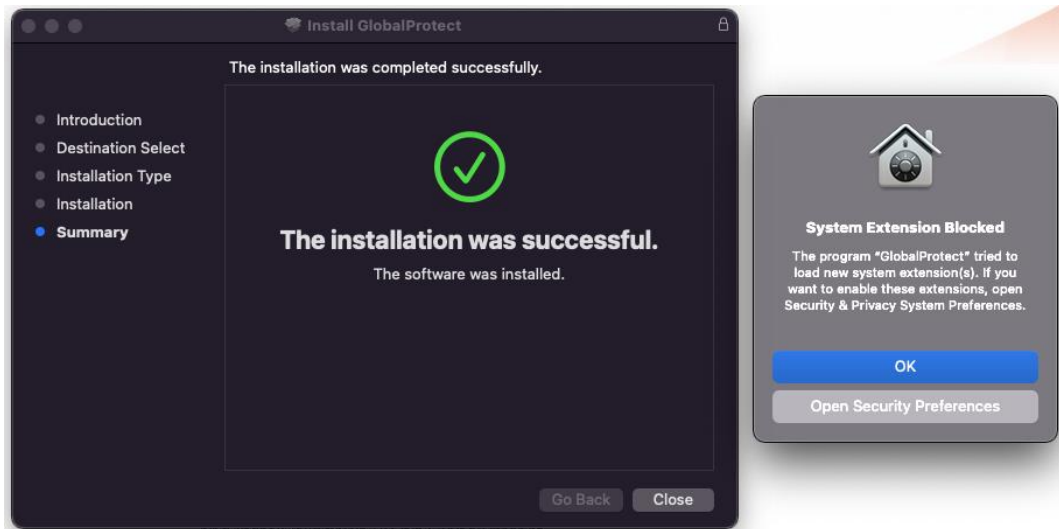
6. Chose Continue to proceed with the installation



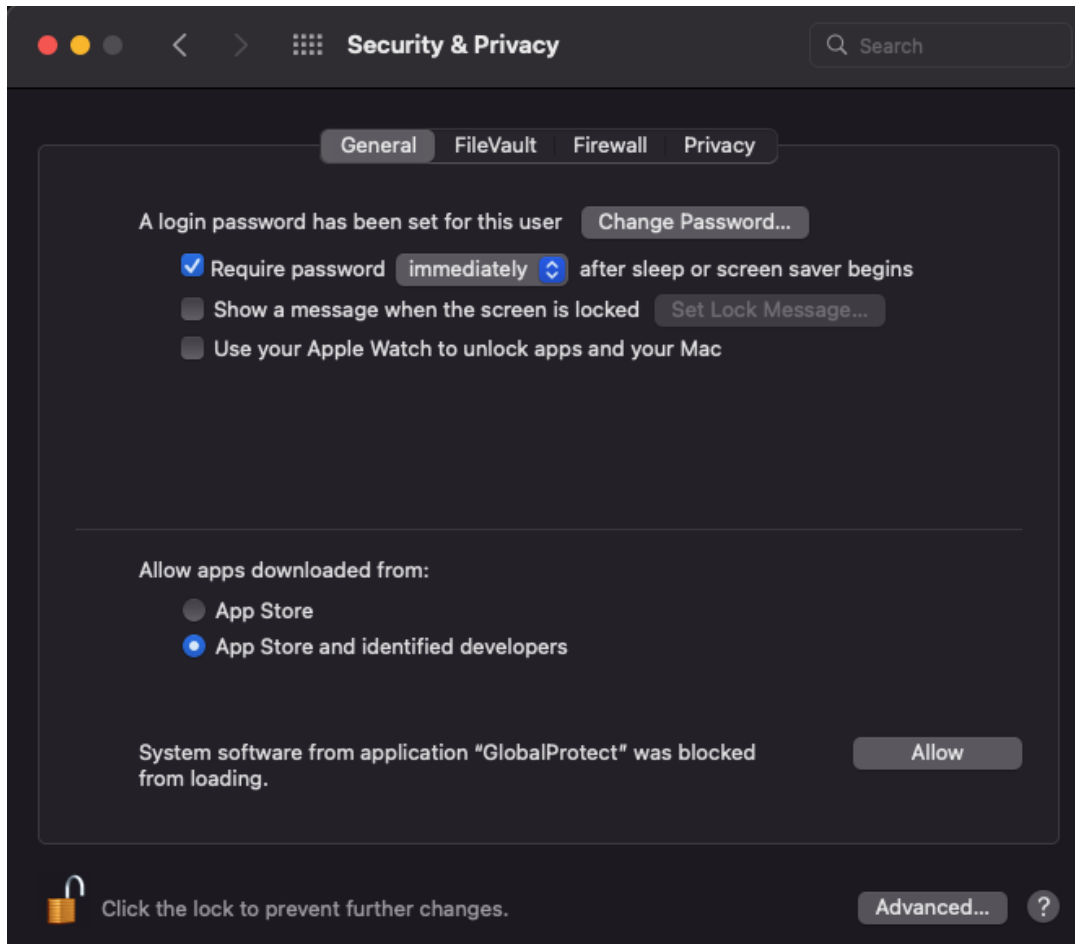
7. Select GlobalProtect and GlobalProtect System extensions. Click on Continue



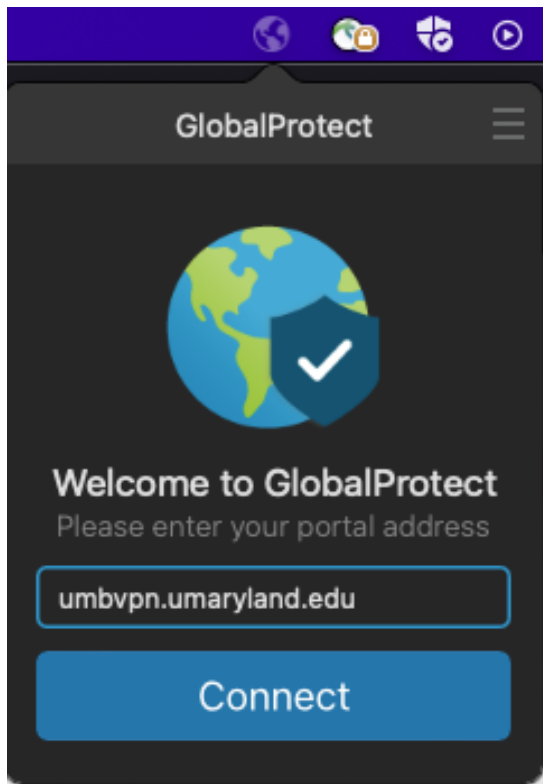
8. When the installation completes, you may be notified that the GlobalProtect system extension is blocked. Click on Open Security Preferences



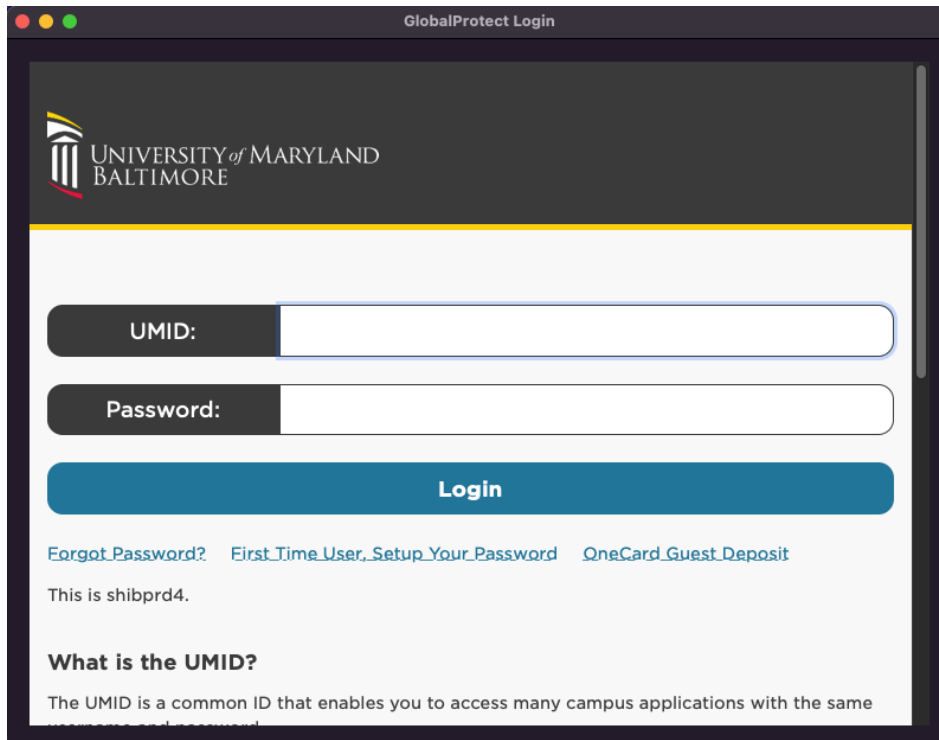
9. Click on Allow to allow the GlobalProtect extension



10. Enter umbvpn.umaryland.edu in the Portal Address field and click Connect.



11. Login with your UMID and Password



12. You are now connected to the Palo Alto GlobalProtect client

