

UMB: EXCELLENCE IN EDUCATION, RESEARCH, SERVICE, AND PATIENT CARE

Vision

The University of Maryland, Baltimore (UMB) is recognized as one of the preeminent public research universities in the nation. We educate students who become leaders in their chosen professions; our faculty conduct research that is internationally recognized; and we provide clinical care and professional services that are of maximum benefit to the communities we serve.

Situated in the heart of downtown Baltimore, UMB is among the nation's leaders in education, research, public service, and patient care. As the founding campus of the University System of Maryland, UMB is celebrating more than 200 years of excellence.

Our graduate and professional schools educate the majority of the state's health care and human service providers and train them to be leaders in the community. The Dental School and the schools of law, medicine, nursing, pharmacy, and social work are ranked among the nation's best institutions. In 2006, the Board of Regents approved the creation of a seventh professional school—the School of Public Health—to meet the growing demand for highly skilled public health professionals.

The University's recent growth has been dramatic, with new facilities that add to its stature as a Baltimore landmark and help attract the nation's top educators, researchers, and students. The Dental School, which ranks eighth among the nation's public dental schools in funding from the National Institutes of Health, opened a \$153 million, 375,000-square-foot building in 2006 that features technological advances

such as electronic patient records, digital imaging, and online curricula. A \$67 million, seven-story, 112,565-square-foot addition to Pharmacy Hall is scheduled to open in fall 2010.

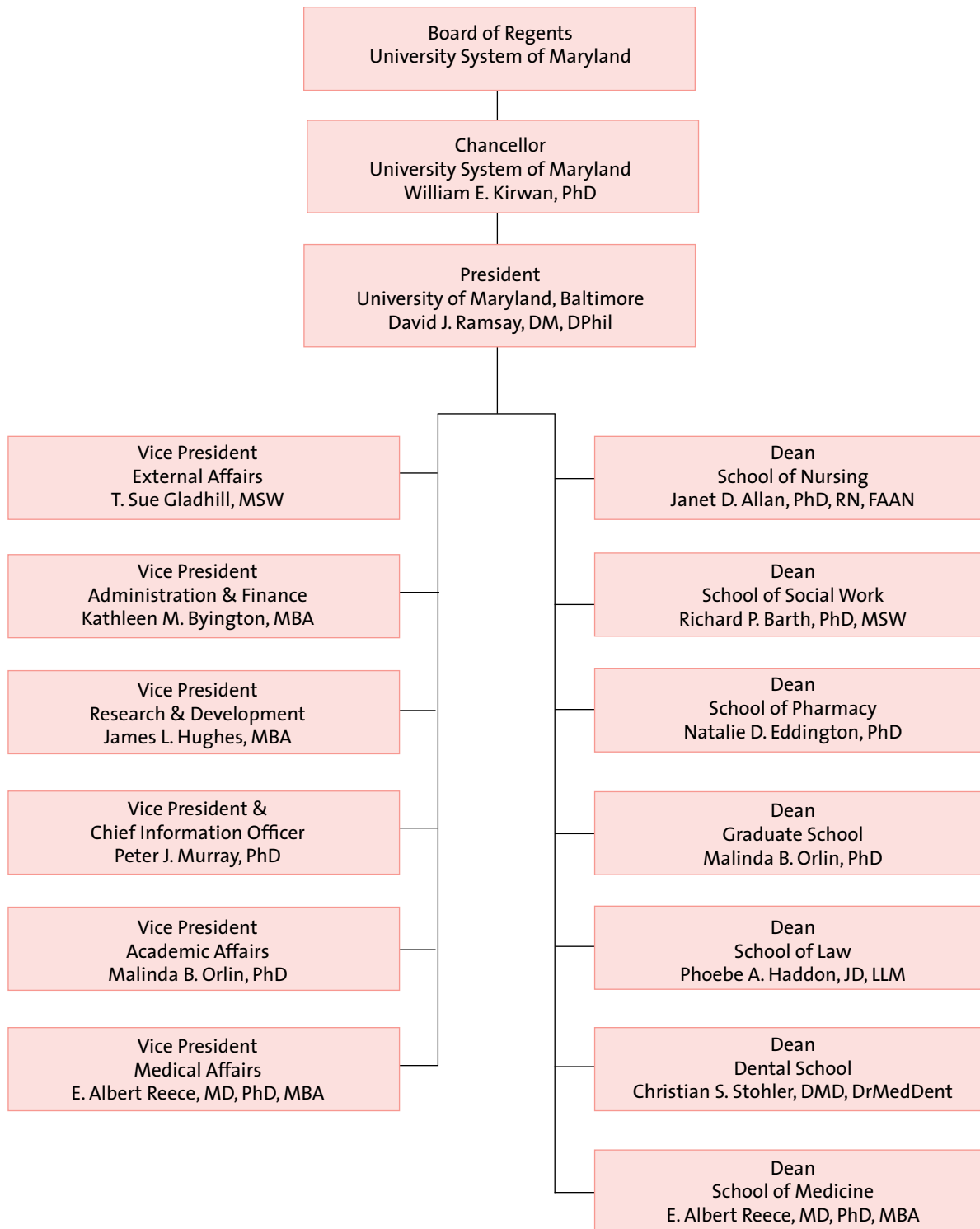
With 6,096 students, 2,358 faculty members, and 4,800 staff, UMB is an economic engine yielding \$15.11 for every General Fund dollar appropriated by the state of Maryland. In addition to UMB's mandates of teaching and research, members of the University community donate more than 2 million hours each year in service to the public. UMB faculty generated \$447.4 million in annual research funding and contributed to important advances in basic science and applied research during Fiscal Year 2008.

UMB boasts several distinguished organized research centers including the School of Medicine's Institute of Human Virology and the Center for Vaccine Development, which is the world's only university vaccine center engaged in the full range of vaccinology—from basic science to clinical evaluation. The Center for Nanomedicine and Cellular Delivery in the School of Pharmacy was recently recognized as an organized research center.

Building One of the planned 10-building University of Maryland BioPark in West Baltimore was fully leased by 2006, bringing much-needed laboratory and office space to the area and encouraging collaboration among biotechnology companies and University faculty. Building Two opened in spring 2008 and is home to the School of Medicine's Institute for Genome Sciences. Building Three and a new state forensic medical center—the most advanced in the nation—are under construction at the BioPark.

U.S. NEWS & WORLD REPORT RANKINGS

- The School of Law is ranked 20th among public law schools. The School's specialty program in health law is ranked second in the country, its specialty program in environmental law is sixth, and its specialty program in clinical law is eighth. The School's part-time program is ranked second among public law schools.
- The School of Medicine is ranked 18th in research and 29th in primary care among public medical schools. The School's physical therapy program is ranked 15th.
- The School of Nursing master's program is ranked seventh among the nation's top schools of nursing, with three specialty programs ranked in the top 10. The Family Nurse Practitioner program is fifth, and the Adult Nurse Practitioner and Nursing Service Administration programs are each ranked sixth.
- The School of Pharmacy is ranked ninth among the nation's pharmacy schools.
- The School of Social Work is ranked 18th in the nation.



■ 2009-2010 ACADEMIC AND REGISTRATION CALENDAR

Consult your school or program for specific registration dates and times.

FALL 2009 <i>(Registration begins in April.)</i>	REGISTRATION ENDS	INSTRUCTION BEGINS
DENTISTRY YEAR 1	Aug. 7	Aug. 10
DENTISTRY YEAR 2	Aug. 14	Aug. 17
DENTISTRY YEAR 3	July 2	July 6
DENTISTRY YEAR 4	May 22	May 26
DENTAL HYGIENE ENTRY LEVEL I	Aug. 12	Aug. 13
DENTAL HYGIENE ENTRY LEVEL II	Aug. 21	Aug. 24
DENTAL HYGIENE RDH	Aug. 21	Aug. 24
DENTAL POSTGRADUATE	July 1	July 1
GENETIC COUNSELING	Aug. 21	Aug. 24
GRADUATE	Aug. 21	Aug. 24
LAW YEAR 1 & CLINIC/LTP	Aug. 25	Aug. 26
LAW, ALL OTHERS	Aug. 25	Aug. 31
MEDICINE YEAR 1	Aug. 11	Aug. 13
MEDICINE YEAR 2	Aug. 11	Aug. 18
MEDICINE YEARS 3 & 4	July 2	July 6
MEDICAL TECHNOLOGY	Aug. 21	Aug. 24
NURSING	Aug. 21	Aug. 24
PHARMACY	Aug. 21	Aug. 24
PHYSICAL THERAPY YEARS 1 & 2	Aug. 21	Aug. 24
PHYSICAL THERAPY YEAR 3	Aug. 21	Aug. 24
PHYSICAL THERAPY TRANSITIONAL	Aug. 19	Aug. 20
POST-PROFESSIONAL DSCPT	Aug. 19	Aug. 20
PUBLIC HEALTH	Aug. 21	Aug. 24
SOCIAL WORK	Aug. 30	Aug. 31

HOLIDAYS

Labor Day Sept. 7
Thanksgiving Nov. 26- 27

DIPLOMA APPLICATION DEADLINE DATE

Sept. 11

TERM ENDS

Dec. 23

DIPLOMA DATE

Dec. 23

Consult your school or program for specific registration dates and times.

WINTER 2010 (Registration begins in November. Term ends Jan. 22, 2010.)	REGISTRATION ENDS	INSTRUCTION BEGINS
ALL SCHOOLS AND PROGRAMS	Jan. 4	Jan. 4

SPRING 2010 (Registration begins in November.)	REGISTRATION ENDS	INSTRUCTION BEGINS
DENTISTRY	Jan. 4	Jan. 4
DENTAL HYGIENE ENTRY LEVEL	Jan. 4	Jan. 4
DENTAL HYGIENE RDH	Jan. 24	Jan. 25
DENTAL POSTGRADUATE	Jan. 4	Jan. 4
GENETIC COUNSELING	Jan. 24	Jan. 25
GRADUATE	Jan. 24	Jan. 25
LAW	Jan. 18	Jan. 19
MEDICINE YEAR 1	Jan. 25	Jan. 26
MEDICINE YEAR 2	Feb. 1	Feb. 2
MEDICINE YEARS 3 & 4	Jan. 3	Jan. 4
MEDICAL TECHNOLOGY	Jan. 18	Jan. 19
NURSING	Jan. 24	Jan. 25
PHARMACY	Jan. 18	Jan. 19
PHYSICAL THERAPY YEARS 1 & 2	Jan. 4	Jan. 4
PHYSICAL THERAPY YEAR 3	Jan. 10	Jan. 11
PHYSICAL THERAPY TRANSITIONAL	Jan. 4	Jan. 4
POST-PROFESSIONAL DSCPT	Jan. 4	Jan. 4
PUBLIC HEALTH	Jan. 24	Jan. 25
SOCIAL WORK	Jan. 18	Jan. 19

HOLIDAYS

MLK Jr. Birthday	Jan. 18
Spring Break	March 15-19

DIPLOMA APPLICATION DEADLINE DATE

Feb. 12

TERM ENDS

May 21

COMMENCEMENT

May 21

■ PUBLIC SAFETY YEARLY CRIME COMPARISON

Criminal Homicide	REPORTED OFFENSES			ARRESTS		
	2006	2007	2008	2006	2007	2008
Murder/Non-negligent Manslaughter	0	0	0	0	0	0
Negligent Manslaughter	0	0	0	0	0	0

Sex Offenses	REPORTED OFFENSES			ARRESTS		
	2006	2007	2008	2006	2007	2008
Forcible Rape	0	0	0	0	0	0
Forcible Sodomy	0	0	0	0	0	0
Sexual Assault With Object	0	0	0	0	0	0
Forcible Fondling	0	0	0	0	0	0
Incest	0	0	0	0	0	0
Statutory Rape	0	0	0	0	0	0

Other Crimes	REPORTED OFFENSES			ARRESTS		
	2006	2007	2008	2006	2007	2008
Robbery	5	9	4	2	3	3
Aggravated Assault	6	4	4	4	3	7
Breaking and Entering	5	1	0	2	0	0
Larceny and Theft	130	105	136	15	10	6
Motor Vehicle Theft	2	0	4	0	0	2
Hate Crimes	0	0	0	0	0	0
Arson	0	0	0	0	0	0
Weapons Violations	0	0	0	0	0	0
Drug Abuse Violations	0	0	0	5	2	5
Liquor Law Violations	0	0	0	3	1	4

	REPORTED OFFENSES			ARRESTS		
	2006	2007	2008	2006	2007	2008
For Other Authority	0	0	0	4	3	10
All Other Arrests	0	0	0	20	23	32

Totals	148	119	148	55	45	69
---------------	------------	------------	------------	-----------	-----------	-----------