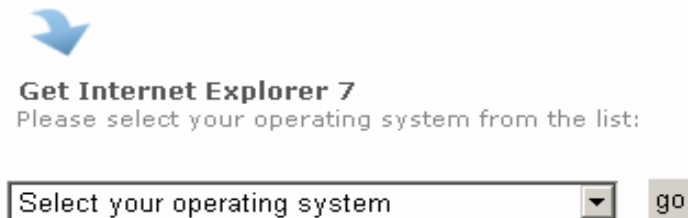
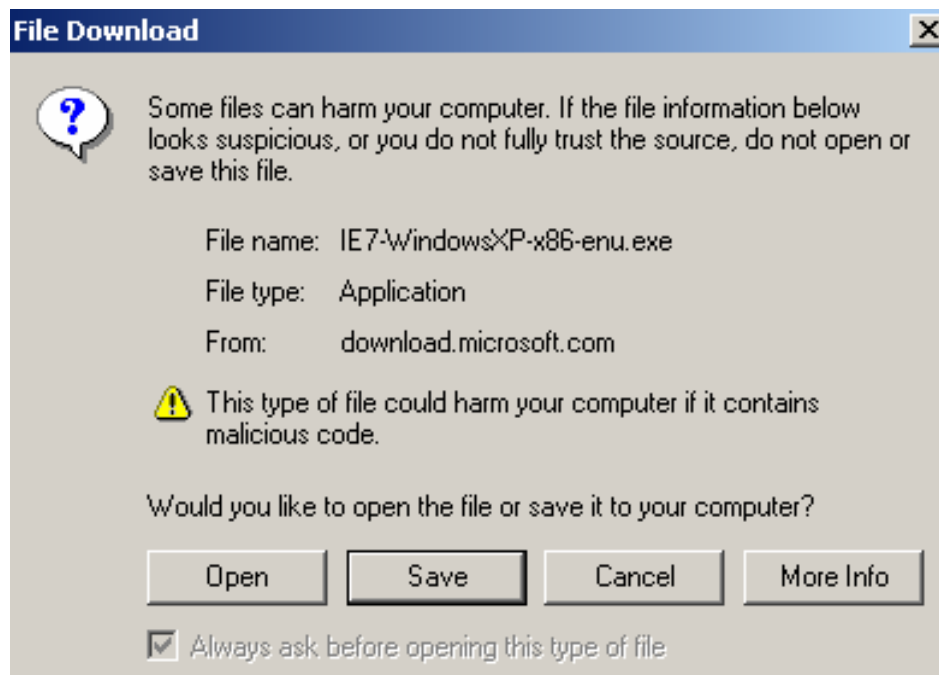


Installing Internet Explorer 7

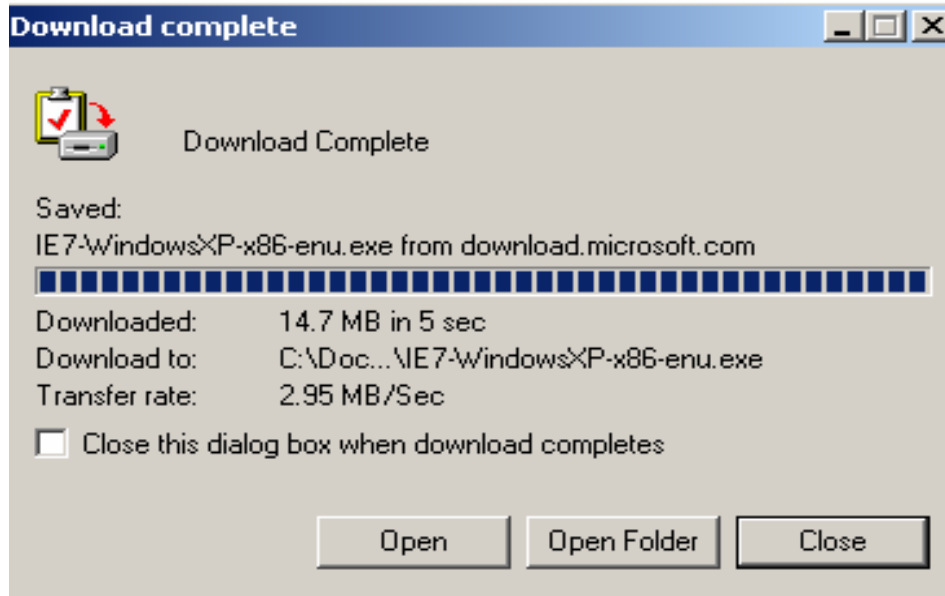
1. Open your Internet Browser, and go to www.microsoft.com .
2. Under “Popular Downloads” or “Downloads”, click on “**Internet Explorer 7**”.
3. Click on “Download it **today**” then “**download**”.
4. From the drop-down list, select your operating system, and then click on the “**go**” button.



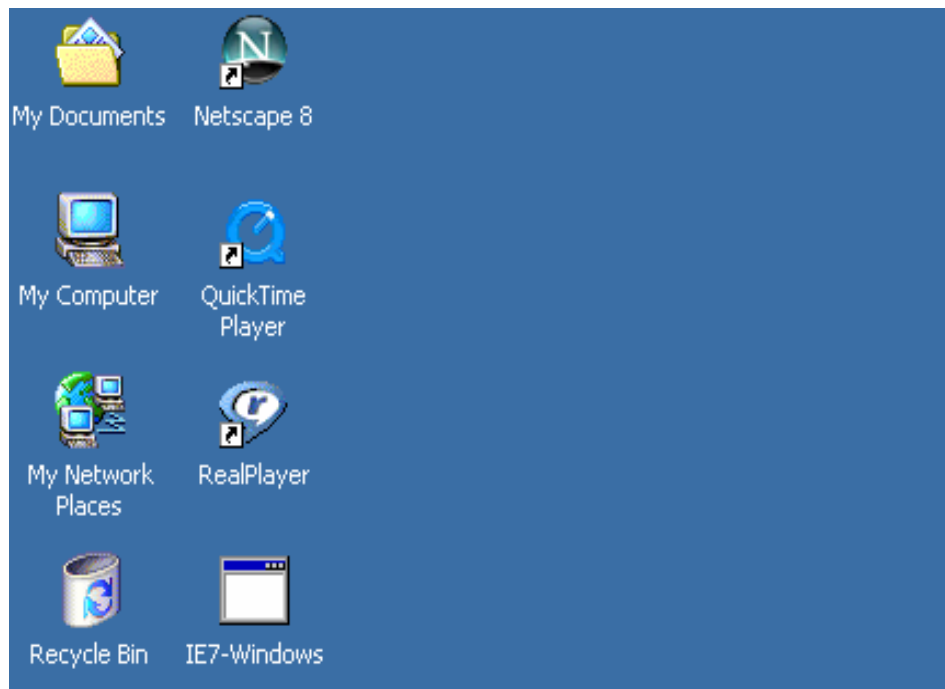
5. In the “File Download” box, click on the “**Save**” button.



6. Choose “Desktop” in the “**Save in:**” drop-down list, and click on the “**Save**” button.
7. In the “Download complete” box, click on the “**Close**” button.



8. Close your Internet Browser.
9. Go to your desktop, and double-click on the “**IE7-Windows**” icon.



10. Follow the Installation Wizard to complete the installation of Internet Explorer 7.
11. Once installation is complete, click on the “start” box (in the lower left corner) then “**All Programs**” and launch Internet Explorer 7 by double-clicking on the “Internet Explorer” icon.

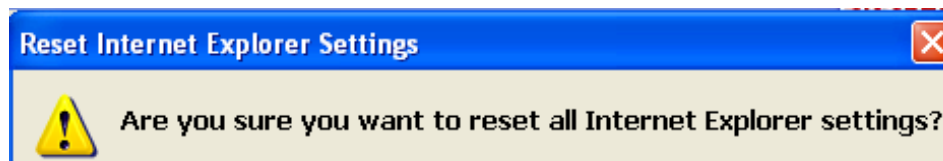
12. When launching Internet Explorer 7, if you get an “Internet Explorer is currently running with add-ons disabled” message, perform the following steps:



13. Click on “**Tools/Internet Options**”.

14. Click on the “**Advanced**” tab.

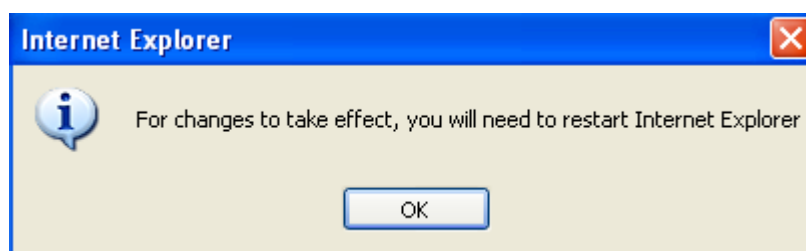
15. Click on the “**Reset**” button.



16. Click on the “**Reset**” button.



17. After all the options are checked, click on the “**Close**” button.



18. Click on the “**OK**” button.

19. Close Internet Explorer 7, and restart Internet Explorer.



20. Right click on the grey area to the right of the “**Customize Your Settings**” tab.

21. Left click on the menu bar.

22. The “Internet Explorer is currently running with add-ons disabled” message should no longer be there.

Questions?

For questions concerning Installing Internet Explorer 7, call the Assistance and Service Center (ASC) Help Desk at 410-706-HELP (4357) weekdays from 8:00 a.m. to 5:00 p.m., or send an email to: help@umaryland.edu .